

**Parkway Local School District  
Month End Closing  
At April 30, 2022**

Acct #183672684	The Peoples Bank	\$ 8,825,169.06
Acct #185052284	The Peoples Bank - Payroll	305,068.39
Acct #11376	STAR Ohio	2,909,626.26
Acct #RMB029315	Multi-Bank Securities, Inc.	-

**Athletic Account:** Acct #184766724      The Peoples Bank      5,000.00

**Cash Accounts:**

Athletic Change Fund	700.00
Admin Change Fund	100.00
Petty Cash Fund	10.00

---

**Total Depository Balance**      **\$ 12,045,673.71**

**Adjustments:**

Outstanding Checks	\$ (265,417.57)
--------------------	-----------------

---

**Adjustments to Bank Balance**      **\$ (265,417.57)**

**Total Cash Balance**      **\$ 11,780,256.14**

**Balance:** Financial Summary      Current Balance      \$ 11,780,256.14  
(FINSUM report)

---

**Total Fund Balance**      **\$ 11,780,256.14**

<u>Interest Earned/(Fees)</u>		
Acct #183672684	The Peoples Bank	\$ 1,085.39
Acct #11376	STAR Ohio	668.46
<b>Total:</b>		<b>\$ 1,753.85</b>

## Board Controlled Funds

	<b>2021</b>	<b>January</b>	<b>February</b>	<b>March</b>	<b>April</b>	<b>May</b>	<b>Jun</b>
<b>General Fund</b>		6,010,414	7,348,177	7,740,673	7,960,304	7,552,045	7,124,409
<b>Permanent Improvement</b>		125,690	212,173	265,861	266,296	266,296	266,296
<b>Classroom Facilities</b>		60,756	76,197	81,446	84,204	83,122	83,122
		<hr/>	<hr/>	<hr/>	<hr/>	<hr/>	<hr/>
TOTAL:		6,196,860	7,636,548	8,087,980	8,310,804	7,901,462	7,473,826
Variance:		(173,814)	1,439,687	451,433	222,823	(409,341)	(427,636)

	<b>2021</b>	<b>July</b>	<b>August</b>	<b>Sept</b>	<b>Oct</b>	<b>Nov</b>	<b>Dec</b>
<b>General Fund</b>		8,220,181	7,932,289	7,787,533	7,736,872	7,426,604	7,051,635
<b>Permanent Improvement</b>		199,410	216,007	218,628	218,628	218,628	218,628
<b>Classroom Facilities</b>		126,699	128,929	125,351	124,296	120,755	120,755
		<hr/>	<hr/>	<hr/>	<hr/>	<hr/>	<hr/>
TOTAL:		8,546,290	8,277,225	8,131,512	8,079,796	7,765,987	7,391,018
Variance:		1,072,464	(269,065)	(145,713)	(51,716)	(313,809)	(374,969)

	<b>2022</b>	<b>January</b>	<b>February</b>	<b>March</b>	<b>April</b>	<b>May</b>	<b>Jun</b>
<b>General Fund</b>		7,784,848	9,060,081	9,366,862	9,543,057		
<b>Permanent Improvement</b>		218,628	313,030	366,201	368,791		
<b>Classroom Facilities</b>		115,765	132,583	142,806	145,596		
		<hr/>	<hr/>	<hr/>	<hr/>	<hr/>	<hr/>
TOTAL:		8,119,242	9,505,694	9,875,869	10,057,445		
Variance:		728,223	1,386,452	370,175	181,576		

**PARKWAY LOCAL SCHOOL DISTRICT**

**Cash Summary Report**

Full Account Code	Description	Initial Cash	MTD Received	FYTD Received	MTD Expended	FYTD Expended	Fund Balance	Encumbrance	Unencumbered Balance
<b>Full Account Code: 001-0000</b>									
001-0000	GENERAL FUND	\$ 7,124,408.80	\$ 1,201,787.85	\$ 11,477,204.83	\$ 1,025,592.38	\$ 9,058,556.48	\$ 9,543,057.15	\$ 614,368.95	\$ 8,928,688.20
		<b>\$ 7,124,408.80</b>	<b>\$ 1,201,787.85</b>	<b>11,477,204.83</b>	<b>\$ 1,025,592.38</b>	<b>\$ 9,058,556.48</b>	<b>\$ 9,543,057.15</b>	<b>\$ 614,368.95</b>	<b>\$ 8,928,688.20</b>
<b>Full Account Code: 002-0000</b>									
002-0000	BOND FUND	1,121,161.32	39,478.05	659,101.26	76,300.00	749,247.91	1,031,014.67	0.00	1,031,014.67
		<b>\$ 1,121,161.32</b>	<b>\$ 39,478.05</b>	<b>\$ 659,101.26</b>	<b>\$ 76,300.00</b>	<b>\$ 749,247.91</b>	<b>\$ 1,031,014.67</b>	<b>\$ 0.00</b>	<b>\$ 1,031,014.67</b>
<b>Full Account Code: 003-0000</b>									
003-0000	PERMANENT IMPROVEMENT	266,295.63	2,590.47	240,435.39	0.00	137,939.64	368,791.38	0.00	368,791.38
		<b>\$ 266,295.63</b>	<b>\$ 2,590.47</b>	<b>\$ 240,435.39</b>	<b>\$ 0.00</b>	<b>\$ 137,939.64</b>	<b>\$ 368,791.38</b>	<b>\$ 0.00</b>	<b>\$ 368,791.38</b>
<b>Full Account Code: 006-0000</b>									
006-0000	FOOD SERVICE	111,324.99	90,905.39	528,458.72	45,023.72	393,247.04	246,536.67	27,742.31	218,794.36
		<b>\$ 111,324.99</b>	<b>\$ 90,905.39</b>	<b>\$ 528,458.72</b>	<b>\$ 45,023.72</b>	<b>\$ 393,247.04</b>	<b>\$ 246,536.67</b>	<b>\$ 27,742.31</b>	<b>\$ 218,794.36</b>
<b>Full Account Code: 007-0000</b>									
007-0000	UNCLAIMED MONIES	646.00	(104.73)	(104.73)	0.00	0.00	541.27	0.00	541.27
		<b>\$ 646.00</b>	<b>\$ (104.73)</b>	<b>\$ (104.73)</b>	<b>\$ 0.00</b>	<b>\$ 0.00</b>	<b>\$ 541.27</b>	<b>\$ 0.00</b>	<b>\$ 541.27</b>
<b>Full Account Code: 007-9002</b>									
007-9002	ROEBUCK SCHOLARSHIP	2,076.00	0.00	0.00	0.00	950.00	1,126.00	0.00	1,126.00
		<b>\$ 2,076.00</b>	<b>\$ 0.00</b>	<b>\$ 0.00</b>	<b>\$ 0.00</b>	<b>\$ 950.00</b>	<b>\$ 1,126.00</b>	<b>\$ 0.00</b>	<b>\$ 1,126.00</b>
<b>Full Account Code: 007-9150</b>									
007-9150	WELLNESS	2,733.57	0.00	2,300.00	0.00	120.00	4,913.57	0.00	4,913.57
		<b>\$ 2,733.57</b>	<b>\$ 0.00</b>	<b>\$ 2,300.00</b>	<b>\$ 0.00</b>	<b>\$ 120.00</b>	<b>\$ 4,913.57</b>	<b>\$ 0.00</b>	<b>\$ 4,913.57</b>
<b>Full Account Code: 007-9200</b>									
007-9200	VAN WERT CO FOUND-KLEIN TRUST	4,053.34	0.00	974.98	0.00	595.00	4,433.32	0.00	4,433.32
		<b>\$ 4,053.34</b>	<b>\$ 0.00</b>	<b>\$ 974.98</b>	<b>\$ 0.00</b>	<b>\$ 595.00</b>	<b>\$ 4,433.32</b>	<b>\$ 0.00</b>	<b>\$ 4,433.32</b>
<b>Full Account Code: 011-0000</b>									
011-0000	LIFE SKILLS	926.13	749.00	5,402.50	331.51	3,734.20	2,594.43	4,263.13	(1,668.70)
		<b>\$ 926.13</b>	<b>\$ 749.00</b>	<b>\$ 5,402.50</b>	<b>\$ 331.51</b>	<b>\$ 3,734.20</b>	<b>\$ 2,594.43</b>	<b>\$ 4,263.13</b>	<b>\$ (1,668.70)</b>
<b>Full Account Code: 018-9190</b>									
018-9190	STAFF FLOWER FUND	1,472.38	0.00	1,215.50	62.00	487.85	2,200.03	1,112.15	1,087.88
		<b>\$ 1,472.38</b>	<b>\$ 0.00</b>	<b>\$ 1,215.50</b>	<b>\$ 62.00</b>	<b>\$ 487.85</b>	<b>\$ 2,200.03</b>	<b>\$ 1,112.15</b>	<b>\$ 1,087.88</b>
<b>Full Account Code: 018-9400</b>									
018-9400	ELEM PRINCIPAL PSS	7,033.50	54.51	3,072.31	200.43	4,143.29	5,962.52	2,119.57	3,842.95
		<b>\$ 7,033.50</b>	<b>\$ 54.51</b>	<b>\$ 3,072.31</b>	<b>\$ 200.43</b>	<b>\$ 4,143.29</b>	<b>\$ 5,962.52</b>	<b>\$ 2,119.57</b>	<b>\$ 3,842.95</b>
<b>Full Account Code: 018-9405</b>									
018-9405	HS PRINCIPAL PSS	6,307.09	1,127.70	5,112.30	0.00	4,298.14	7,121.25	1,720.00	5,401.25
		<b>\$ 6,307.09</b>	<b>\$ 1,127.70</b>	<b>\$ 5,112.30</b>	<b>\$ 0.00</b>	<b>\$ 4,298.14</b>	<b>\$ 7,121.25</b>	<b>\$ 1,720.00</b>	<b>\$ 5,401.25</b>
<b>Full Account Code: 018-9410</b>									
018-9410	MS PRINCIPAL PSS	15,524.38	5,502.01	24,194.87	1,186.04	15,565.56	24,153.69	21,725.41	2,428.28
		<b>\$ 15,524.38</b>	<b>\$ 5,502.01</b>	<b>\$ 24,194.87</b>	<b>\$ 1,186.04</b>	<b>\$ 15,565.56</b>	<b>\$ 24,153.69</b>	<b>\$ 21,725.41</b>	<b>\$ 2,428.28</b>

## PARKWAY LOCAL SCHOOL DISTRICT Cash Summary Report

Full Account Code	Description	Initial Cash	MTD Received	FYTD Received	MTD Expended	FYTD Expended	Fund Balance	Encumbrance	Unencumbered Balance
<b>Full Account Code: 018-9411</b>									
018-9411	WASHINGTON DC	\$ 38,179.31	\$ (664.85)	\$ 50,657.15	\$ 0.00	\$ 49,790.40	\$ 39,046.06	\$ 159.98	\$ 38,886.08
		<b>\$ 38,179.31</b>	<b>\$ (664.85)</b>	<b>\$ 50,657.15</b>	<b>\$ 0.00</b>	<b>\$ 49,790.40</b>	<b>\$ 39,046.06</b>	<b>\$ 159.98</b>	<b>\$ 38,886.08</b>
<b>Full Account Code: 018-9421</b>									
018-9421	NEEDY KIDS	1,490.00	0.00	0.00	0.00	0.00	1,490.00	0.00	1,490.00
		<b>\$ 1,490.00</b>	<b>\$ 0.00</b>	<b>\$ 0.00</b>	<b>\$ 0.00</b>	<b>\$ 0.00</b>	<b>\$ 1,490.00</b>	<b>\$ 0.00</b>	<b>\$ 1,490.00</b>
<b>Full Account Code: 019-9500</b>									
019-9500	WATCH TV TECHNOLOGY	9,213.74	0.00	0.00	0.00	9,213.74	0.00	0.00	0.00
		<b>\$ 9,213.74</b>	<b>\$ 0.00</b>	<b>\$ 0.00</b>	<b>\$ 0.00</b>	<b>\$ 9,213.74</b>	<b>\$ 0.00</b>	<b>\$ 0.00</b>	<b>\$ 0.00</b>
<b>Full Account Code: 020-0000</b>									
020-0000	PRESCHOOL	108,460.84	8,261.00	60,284.00	6,650.60	35,715.16	133,029.68	167.13	132,862.55
		<b>\$ 108,460.84</b>	<b>\$ 8,261.00</b>	<b>\$ 60,284.00</b>	<b>\$ 6,650.60</b>	<b>\$ 35,715.16</b>	<b>\$ 133,029.68</b>	<b>\$ 167.13</b>	<b>\$ 132,862.55</b>
<b>Full Account Code: 022-9601</b>									
022-9601	OHSAA VOLLEYBALL TOURNAMENT	0.00	0.00	300.00	0.00	268.08	31.92	0.00	31.92
		<b>\$ 0.00</b>	<b>\$ 0.00</b>	<b>\$ 300.00</b>	<b>\$ 0.00</b>	<b>\$ 268.08</b>	<b>\$ 31.92</b>	<b>\$ 0.00</b>	<b>\$ 31.92</b>
<b>Full Account Code: 034-0000</b>									
034-0000	CLASSROOM FAC. MAINT.	83,121.63	2,790.26	81,032.93	0.00	18,558.27	145,596.29	7,000.00	138,596.29
		<b>\$ 83,121.63</b>	<b>\$ 2,790.26</b>	<b>\$ 81,032.93</b>	<b>\$ 0.00</b>	<b>\$ 18,558.27</b>	<b>\$ 145,596.29</b>	<b>\$ 7,000.00</b>	<b>\$ 138,596.29</b>
<b>Full Account Code: 200-9020</b>									
200-9020	CLASS OF 2020	3,238.86	0.00	0.00	0.00	3,238.86	0.00	0.00	0.00
		<b>\$ 3,238.86</b>	<b>\$ 0.00</b>	<b>\$ 0.00</b>	<b>\$ 0.00</b>	<b>\$ 3,238.86</b>	<b>\$ 0.00</b>	<b>\$ 0.00</b>	<b>\$ 0.00</b>
<b>Full Account Code: 200-9021</b>									
200-9021	CLASS OF 2021	2,548.01	0.00	0.00	0.00	2,548.01	0.00	0.00	0.00
		<b>\$ 2,548.01</b>	<b>\$ 0.00</b>	<b>\$ 0.00</b>	<b>\$ 0.00</b>	<b>\$ 2,548.01</b>	<b>\$ 0.00</b>	<b>\$ 0.00</b>	<b>\$ 0.00</b>
<b>Full Account Code: 200-9022</b>									
200-9022	CLASS OF 2022	2,427.37	1,385.00	7,211.87	2,588.82	2,588.82	7,050.42	2,969.50	4,080.92
		<b>\$ 2,427.37</b>	<b>\$ 1,385.00</b>	<b>\$ 7,211.87</b>	<b>\$ 2,588.82</b>	<b>\$ 2,588.82</b>	<b>\$ 7,050.42</b>	<b>\$ 2,969.50</b>	<b>\$ 4,080.92</b>
<b>Full Account Code: 200-9023</b>									
200-9023	CLASS OF 2023	3,979.75	560.00	1,250.00	925.00	925.00	4,304.75	4,550.00	(245.25)
		<b>\$ 3,979.75</b>	<b>\$ 560.00</b>	<b>\$ 1,250.00</b>	<b>\$ 925.00</b>	<b>\$ 925.00</b>	<b>\$ 4,304.75</b>	<b>\$ 4,550.00</b>	<b>\$ (245.25)</b>
<b>Full Account Code: 200-9024</b>									
200-9024	CLASS OF 2024	1,315.00	160.00	1,236.00	0.00	0.00	2,551.00	0.00	2,551.00
		<b>\$ 1,315.00</b>	<b>\$ 160.00</b>	<b>\$ 1,236.00</b>	<b>\$ 0.00</b>	<b>\$ 0.00</b>	<b>\$ 2,551.00</b>	<b>\$ 0.00</b>	<b>\$ 2,551.00</b>
<b>Full Account Code: 200-9025</b>									
200-9025	CLASS OF 2025	0.00	180.00	3,535.00	0.00	1,800.00	1,735.00	0.00	1,735.00
		<b>\$ 0.00</b>	<b>\$ 180.00</b>	<b>\$ 3,535.00</b>	<b>\$ 0.00</b>	<b>\$ 1,800.00</b>	<b>\$ 1,735.00</b>	<b>\$ 0.00</b>	<b>\$ 1,735.00</b>
<b>Full Account Code: 200-9110</b>									
200-9110	ART CLUB	496.58	0.00	0.00	0.00	0.00	496.58	250.00	246.58
		<b>\$ 496.58</b>	<b>\$ 0.00</b>	<b>\$ 0.00</b>	<b>\$ 0.00</b>	<b>\$ 0.00</b>	<b>\$ 496.58</b>	<b>\$ 250.00</b>	<b>\$ 246.58</b>
<b>Full Account Code: 200-9170</b>									

## PARKWAY LOCAL SCHOOL DISTRICT

### Cash Summary Report

Full Account Code	Description	Initial Cash	MTD Received	FYTD Received	MTD Expended	FYTD Expended	Fund Balance	Encumbrance	Unencumbered Balance
200-9170	SCIENCE CLUB	\$ 616.25	\$ 0.00	\$ 110.00	\$ 0.00	\$ 0.00	\$ 726.25	\$ 0.00	\$ 726.25
		<b>\$ 616.25</b>	<b>\$ 0.00</b>	<b>\$ 110.00</b>	<b>\$ 0.00</b>	<b>\$ 0.00</b>	<b>\$ 726.25</b>	<b>\$ 0.00</b>	<b>\$ 726.25</b>
<b>Full Account Code: 200-9200</b>									
200-9200	FOREIGN LANGUAGE CLUB	22.20	0.00	410.05	0.00	364.81	67.44	0.00	67.44
		<b>\$ 22.20</b>	<b>\$ 0.00</b>	<b>\$ 410.05</b>	<b>\$ 0.00</b>	<b>\$ 364.81</b>	<b>\$ 67.44</b>	<b>\$ 0.00</b>	<b>\$ 67.44</b>
<b>Full Account Code: 200-9220</b>									
200-9220	DRAMA CLUB	1,287.25	0.00	4,763.00	0.00	2,096.60	3,953.65	0.00	3,953.65
		<b>\$ 1,287.25</b>	<b>\$ 0.00</b>	<b>\$ 4,763.00</b>	<b>\$ 0.00</b>	<b>\$ 2,096.60</b>	<b>\$ 3,953.65</b>	<b>\$ 0.00</b>	<b>\$ 3,953.65</b>
<b>Full Account Code: 200-9240</b>									
200-9240	MIDDLE SCHOOL MUSICAL	3,436.82	0.00	3,882.00	0.00	1,455.42	5,863.40	150.00	5,713.40
		<b>\$ 3,436.82</b>	<b>\$ 0.00</b>	<b>\$ 3,882.00</b>	<b>\$ 0.00</b>	<b>\$ 1,455.42</b>	<b>\$ 5,863.40</b>	<b>\$ 150.00</b>	<b>\$ 5,713.40</b>
<b>Full Account Code: 200-9320</b>									
200-9320	FCCLA	2,876.42	165.00	1,155.00	0.00	120.75	3,910.67	1,379.25	2,531.42
		<b>\$ 2,876.42</b>	<b>\$ 165.00</b>	<b>\$ 1,155.00</b>	<b>\$ 0.00</b>	<b>\$ 120.75</b>	<b>\$ 3,910.67</b>	<b>\$ 1,379.25</b>	<b>\$ 2,531.42</b>
<b>Full Account Code: 200-9330</b>									
200-9330	FFA	31,062.77	1,422.00	12,990.19	(758.10)	12,523.05	31,529.91	3,630.00	27,899.91
		<b>\$ 31,062.77</b>	<b>\$ 1,422.00</b>	<b>\$ 12,990.19</b>	<b>\$ (758.10)</b>	<b>\$ 12,523.05</b>	<b>\$ 31,529.91</b>	<b>\$ 3,630.00</b>	<b>\$ 27,899.91</b>
<b>Full Account Code: 200-9360</b>									
200-9360	TECH CLUB	293.82	0.00	0.00	0.00	0.00	293.82	0.00	293.82
		<b>\$ 293.82</b>	<b>\$ 0.00</b>	<b>\$ 0.00</b>	<b>\$ 0.00</b>	<b>\$ 0.00</b>	<b>\$ 293.82</b>	<b>\$ 0.00</b>	<b>\$ 293.82</b>
<b>Full Account Code: 200-9370</b>									
200-9370	FBLA	124.93	0.00	0.00	0.00	0.00	124.93	0.00	124.93
		<b>\$ 124.93</b>	<b>\$ 0.00</b>	<b>\$ 0.00</b>	<b>\$ 0.00</b>	<b>\$ 0.00</b>	<b>\$ 124.93</b>	<b>\$ 0.00</b>	<b>\$ 124.93</b>
<b>Full Account Code: 200-9530</b>									
200-9530	EXPLORATION	384.21	0.00	0.00	0.00	0.00	384.21	0.00	384.21
		<b>\$ 384.21</b>	<b>\$ 0.00</b>	<b>\$ 0.00</b>	<b>\$ 0.00</b>	<b>\$ 0.00</b>	<b>\$ 384.21</b>	<b>\$ 0.00</b>	<b>\$ 384.21</b>
<b>Full Account Code: 200-9550</b>									
200-9550	PEP CLUB	1,083.69	0.00	2,986.00	0.00	2,575.54	1,494.15	0.00	1,494.15
		<b>\$ 1,083.69</b>	<b>\$ 0.00</b>	<b>\$ 2,986.00</b>	<b>\$ 0.00</b>	<b>\$ 2,575.54</b>	<b>\$ 1,494.15</b>	<b>\$ 0.00</b>	<b>\$ 1,494.15</b>
<b>Full Account Code: 200-9600</b>									
200-9600	MS STUDENT COUNCIL	370.74	0.00	0.00	0.00	0.00	370.74	0.00	370.74
		<b>\$ 370.74</b>	<b>\$ 0.00</b>	<b>\$ 0.00</b>	<b>\$ 0.00</b>	<b>\$ 0.00</b>	<b>\$ 370.74</b>	<b>\$ 0.00</b>	<b>\$ 370.74</b>
<b>Full Account Code: 200-9610</b>									
200-9610	HS STUDENT COUNCIL	1,874.30	0.00	1,291.00	0.00	679.00	2,486.30	0.00	2,486.30
		<b>\$ 1,874.30</b>	<b>\$ 0.00</b>	<b>\$ 1,291.00</b>	<b>\$ 0.00</b>	<b>\$ 679.00</b>	<b>\$ 2,486.30</b>	<b>\$ 0.00</b>	<b>\$ 2,486.30</b>
<b>Full Account Code: 200-9640</b>									
200-9640	SADD	1.08	0.00	0.00	0.00	0.00	1.08	0.00	1.08
		<b>\$ 1.08</b>	<b>\$ 0.00</b>	<b>\$ 0.00</b>	<b>\$ 0.00</b>	<b>\$ 0.00</b>	<b>\$ 1.08</b>	<b>\$ 0.00</b>	<b>\$ 1.08</b>
<b>Full Account Code: 200-9710</b>									
200-9710	NATIONAL HONOR SOCIETY	264.61	0.00	696.00	0.00	214.20	746.41	500.00	246.41
		<b>\$ 264.61</b>	<b>\$ 0.00</b>	<b>\$ 696.00</b>	<b>\$ 0.00</b>	<b>\$ 214.20</b>	<b>\$ 746.41</b>	<b>\$ 500.00</b>	<b>\$ 246.41</b>

**PARKWAY LOCAL SCHOOL DISTRICT**

**Cash Summary Report**

Full Account Code	Description	Initial Cash	MTD Received	FYTD Received	MTD Expended	FYTD Expended	Fund Balance	Encumbrance	Unencumbered Balance
<b>Full Account Code: 300-0000</b>									
300-0000	ATHLETIC FUND	\$ 7,065.12	\$ 7,088.00	\$ 204,550.27	\$ 9,139.27	\$ 144,787.98	\$ 66,827.41	\$ 16,374.35	\$ 50,453.06
		<b>\$ 7,065.12</b>	<b>\$ 7,088.00</b>	<b>\$ 204,550.27</b>	<b>\$ 9,139.27</b>	<b>\$ 144,787.98</b>	<b>\$ 66,827.41</b>	<b>\$ 16,374.35</b>	<b>\$ 50,453.06</b>
<b>Full Account Code: 300-9440</b>									
300-9440	BAND	4,118.25	0.00	0.00	347.71	1,454.88	2,663.37	0.00	2,663.37
		<b>\$ 4,118.25</b>	<b>\$ 0.00</b>	<b>\$ 0.00</b>	<b>\$ 347.71</b>	<b>\$ 1,454.88</b>	<b>\$ 2,663.37</b>	<b>\$ 0.00</b>	<b>\$ 2,663.37</b>
<b>Full Account Code: 300-9460</b>									
300-9460	CHOIR	625.06	0.00	0.00	0.00	0.00	625.06	600.00	25.06
		<b>\$ 625.06</b>	<b>\$ 0.00</b>	<b>\$ 0.00</b>	<b>\$ 0.00</b>	<b>\$ 0.00</b>	<b>\$ 625.06</b>	<b>\$ 600.00</b>	<b>\$ 25.06</b>
<b>Full Account Code: 300-9650</b>									
300-9650	HIGH SCHOOL MEDIA CENTER	881.82	38.00	127.90	0.00	449.40	560.32	0.00	560.32
		<b>\$ 881.82</b>	<b>\$ 38.00</b>	<b>\$ 127.90</b>	<b>\$ 0.00</b>	<b>\$ 449.40</b>	<b>\$ 560.32</b>	<b>\$ 0.00</b>	<b>\$ 560.32</b>
<b>Full Account Code: 300-9653</b>									
300-9653	ELEMENTARY MEDIA CENTER	2,448.78	0.00	317.00	194.47	194.47	2,571.31	0.00	2,571.31
		<b>\$ 2,448.78</b>	<b>\$ 0.00</b>	<b>\$ 317.00</b>	<b>\$ 194.47</b>	<b>\$ 194.47</b>	<b>\$ 2,571.31</b>	<b>\$ 0.00</b>	<b>\$ 2,571.31</b>
<b>Full Account Code: 300-9680</b>									
300-9680	YEARBOOK	6,516.89	245.00	9,421.00	0.00	8,132.01	7,805.88	0.00	7,805.88
		<b>\$ 6,516.89</b>	<b>\$ 245.00</b>	<b>\$ 9,421.00</b>	<b>\$ 0.00</b>	<b>\$ 8,132.01</b>	<b>\$ 7,805.88</b>	<b>\$ 0.00</b>	<b>\$ 7,805.88</b>
<b>Full Account Code: 300-9700</b>									
300-9700	SCHOLASTIC BOWL	125.00	0.00	0.00	0.00	0.00	125.00	0.00	125.00
		<b>\$ 125.00</b>	<b>\$ 0.00</b>	<b>\$ 0.00</b>	<b>\$ 0.00</b>	<b>\$ 0.00</b>	<b>\$ 125.00</b>	<b>\$ 0.00</b>	<b>\$ 125.00</b>
<b>Full Account Code: 439-9022</b>									
439-9022	PUBLIC SCHOOL PRESCHOOL	0.00	0.00	20,000.00	0.00	20,000.00	0.00	0.00	0.00
		<b>\$ 0.00</b>	<b>\$ 0.00</b>	<b>\$ 20,000.00</b>	<b>\$ 0.00</b>	<b>\$ 20,000.00</b>	<b>\$ 0.00</b>	<b>\$ 0.00</b>	<b>\$ 0.00</b>
<b>Full Account Code: 451-9022</b>									
451-9022	DATA COMMUNICATION FUND	0.00	0.00	5,400.00	0.00	5,400.00	0.00	0.00	0.00
		<b>\$ 0.00</b>	<b>\$ 0.00</b>	<b>\$ 5,400.00</b>	<b>\$ 0.00</b>	<b>\$ 5,400.00</b>	<b>\$ 0.00</b>	<b>\$ 0.00</b>	<b>\$ 0.00</b>
<b>Full Account Code: 461-9022</b>									
461-9022	AG EDUCATION 5TH QUARTER	0.00	0.00	3,045.68	0.00	3,045.68	0.00	0.00	0.00
		<b>\$ 0.00</b>	<b>\$ 0.00</b>	<b>\$ 3,045.68</b>	<b>\$ 0.00</b>	<b>\$ 3,045.68</b>	<b>\$ 0.00</b>	<b>\$ 0.00</b>	<b>\$ 0.00</b>
<b>Full Account Code: 467-0000</b>									
467-0000	STUDENT WELLNESS & SUCCESS	300,588.42	0.00	0.00	18,120.79	212,627.59	87,960.83	0.00	87,960.83
		<b>\$ 300,588.42</b>	<b>\$ 0.00</b>	<b>\$ 0.00</b>	<b>\$ 18,120.79</b>	<b>\$ 212,627.59</b>	<b>\$ 87,960.83</b>	<b>\$ 0.00</b>	<b>\$ 87,960.83</b>
<b>Full Account Code: 499-9002</b>									
499-9002	H.S. SCHOOL IMPROVEMENT INCENTIVE AWARD	342.87	0.00	0.00	0.00	0.00	342.87	0.00	342.87
		<b>\$ 342.87</b>	<b>\$ 0.00</b>	<b>\$ 0.00</b>	<b>\$ 0.00</b>	<b>\$ 0.00</b>	<b>\$ 342.87</b>	<b>\$ 0.00</b>	<b>\$ 342.87</b>
<b>Full Account Code: 499-9022</b>									
499-9022	MISCELLANEOUS STATE GRANT FUND	0.00	45,000.00	45,000.00	0.00	45,000.00	0.00	0.00	0.00
		<b>\$ 0.00</b>	<b>\$ 45,000.00</b>	<b>\$ 45,000.00</b>	<b>\$ 0.00</b>	<b>\$ 45,000.00</b>	<b>\$ 0.00</b>	<b>\$ 0.00</b>	<b>\$ 0.00</b>

**PARKWAY LOCAL SCHOOL DISTRICT**

**Cash Summary Report**

Full Account Code	Description	Initial Cash	MTD Received	FYTD Received	MTD Expended	FYTD Expended	Fund Balance	Encumbrance	Unencumbered Balance
<b>Full Account Code: 499-9092</b>									
499-9092	MISCELLANEOUS STATE GRANT FUND	\$ 0.00	\$ 0.00	\$ 5,231.55	\$ 0.00	\$ 0.00	\$ 5,231.55	\$ 0.00	\$ 5,231.55
		<b>\$ 0.00</b>	<b>\$ 0.00</b>	<b>\$ 5,231.55</b>	<b>\$ 0.00</b>	<b>\$ 0.00</b>	<b>\$ 5,231.55</b>	<b>\$ 0.00</b>	<b>\$ 5,231.55</b>
<b>Full Account Code: 499-9120</b>									
499-9120	SAFETY TRAINING GRANT FY20	497.54	0.00	0.00	0.00	0.00	497.54	0.00	497.54
		<b>\$ 497.54</b>	<b>\$ 0.00</b>	<b>\$ 0.00</b>	<b>\$ 0.00</b>	<b>\$ 0.00</b>	<b>\$ 497.54</b>	<b>\$ 0.00</b>	<b>\$ 497.54</b>
<b>Full Account Code: 507-0000</b>									
507-0000	ESSER ELEM & SECNDRY EMERGENCY RELIEF COVID	(7,330.67)	27,929.42	249,380.73	45,848.55	266,735.67	(24,685.61)	38,550.73	(63,236.34)
		<b>\$ (7,330.67)</b>	<b>\$ 27,929.42</b>	<b>\$ 249,380.73</b>	<b>\$ 45,848.55</b>	<b>\$ 266,735.67</b>	<b>\$ (24,685.61)</b>	<b>\$ 38,550.73</b>	<b>\$ (63,236.34)</b>
<b>Full Account Code: 507-9022</b>									
507-9022	ARP ESSER	0.00	71,569.00	290,486.40	0.00	290,486.40	0.00	241,347.79	(241,347.79)
		<b>\$ 0.00</b>	<b>\$ 71,569.00</b>	<b>\$ 290,486.40</b>	<b>\$ 0.00</b>	<b>\$ 290,486.40</b>	<b>\$ 0.00</b>	<b>\$ 241,347.79</b>	<b>\$ (241,347.79)</b>
<b>Full Account Code: 516-9022</b>									
516-9022	IDEA PART B GRANTS	0.00	0.00	47,433.65	0.00	47,433.65	0.00	0.00	0.00
		<b>\$ 0.00</b>	<b>\$ 0.00</b>	<b>\$ 47,433.65</b>	<b>\$ 0.00</b>	<b>\$ 47,433.65</b>	<b>\$ 0.00</b>	<b>\$ 0.00</b>	<b>\$ 0.00</b>
<b>Full Account Code: 572-9022</b>									
572-9022	TITLE I FY22	0.00	30,207.69	144,568.49	4,618.14	144,568.49	0.00	0.00	0.00
		<b>\$ 0.00</b>	<b>\$ 30,207.69</b>	<b>\$ 144,568.49</b>	<b>\$ 4,618.14</b>	<b>\$ 144,568.49</b>	<b>\$ 0.00</b>	<b>\$ 0.00</b>	<b>\$ 0.00</b>
<b>Full Account Code: 572-9092</b>									
572-9092	TITLE I DISADVANTAGED CHILDREN	0.00	499.66	4,996.55	0.00	4,996.55	0.00	0.00	0.00
		<b>\$ 0.00</b>	<b>\$ 499.66</b>	<b>\$ 4,996.55</b>	<b>\$ 0.00</b>	<b>\$ 4,996.55</b>	<b>\$ 0.00</b>	<b>\$ 0.00</b>	<b>\$ 0.00</b>
<b>Full Account Code: 584-9022</b>									
584-9022	TITLE IV-A STUDENT SUPPORT AND ACADEMIC ENRICHMENT	0.00	7,335.72	7,335.72	3,588.70	7,335.72	0.00	0.00	0.00
		<b>\$ 0.00</b>	<b>\$ 7,335.72</b>	<b>\$ 7,335.72</b>	<b>\$ 3,588.70</b>	<b>\$ 7,335.72</b>	<b>\$ 0.00</b>	<b>\$ 0.00</b>	<b>\$ 0.00</b>
<b>Full Account Code: 587-9022</b>									
587-9022	IDEA PRESCHOOL-HANDICAPPED	0.00	0.00	3,511.81	0.00	3,511.81	0.00	0.00	0.00
		<b>\$ 0.00</b>	<b>\$ 0.00</b>	<b>\$ 3,511.81</b>	<b>\$ 0.00</b>	<b>\$ 3,511.81</b>	<b>\$ 0.00</b>	<b>\$ 0.00</b>	<b>\$ 0.00</b>
<b>Full Account Code: 590-9022</b>									
590-9022	TITLE II-A FY22	0.00	2,977.05	29,770.44	0.00	29,770.44	0.00	0.00	0.00
		<b>\$ 0.00</b>	<b>\$ 2,977.05</b>	<b>\$ 29,770.44</b>	<b>\$ 0.00</b>	<b>\$ 29,770.44</b>	<b>\$ 0.00</b>	<b>\$ 0.00</b>	<b>\$ 0.00</b>
<b>Grand Total</b>		<b>\$ 9,278,012.39</b>	<b>\$ 1,549,238.20</b>	<b>\$ 14,251,735.31</b>	<b>\$ 1,239,960.03</b>	<b>\$ 11,749,491.56</b>	<b>\$ 11,780,256.14</b>	<b>\$ 990,680.25</b>	<b>\$ 10,789,575.89</b>

Start Date: 04/01/22

End Date: 04/30/22

## PARKWAY LOCAL SCHOOL DISTRICT Receipts Ledger Report

Receipt #	Line #	Date	Type	Description	Full Account Code	Amount
<b>Fund:</b>	<b>001</b>					
14178	1	4/22/2022	RC	CAREER TECH CODING CORRECTION	001-3219-0000-000000-001	\$ (2,858.57)
14177	10	4/22/2022	RC	FOUNDATION PYMT	001-3219-0000-000000-001	1,430.62
14146	10	4/8/2022	RC	FOUNDATION PYMT	001-3219-0000-000000-001	1,427.95
14177	9	4/22/2022	RC	FOUNDATION PYMT	001-3218-0000-000000-000	9,041.45
14146	9	4/8/2022	RC	FOUNDATION PYMT	001-3218-0000-000000-000	8,992.64
14177	8	4/22/2022	RC	FOUNDATION PYMT	001-3217-0000-000000-000	(1,001.10)
14146	8	4/8/2022	RC	FOUNDATION PYMT	001-3217-0000-000000-000	(1,015.98)
14177	7	4/22/2022	RC	FOUNDATION PYMT	001-3216-0000-000000-000	1,548.12
14146	7	4/8/2022	RC	FOUNDATION PYMT	001-3216-0000-000000-000	1,543.26
14178	2	4/22/2022	RC	CAREER TECH CODING CORRECTION	001-3215-0000-000000-000	2,858.57
14177	5	4/22/2022	RC	FOUNDATION PYMT	001-3211-0000-000000-000	(10,043.71)
14146	5	4/8/2022	RC	FOUNDATION PYMT	001-3211-0000-000000-000	(10,043.71)
14161	1	4/20/2022	RC	MEDICAID	001-3190-0000-000000-000	612.97
14119	1	4/4/2022	RC	MEDICAID	001-3190-0000-000000-000	3,273.18
14153	5	4/19/2022	RC	VW COUNTY PROPERTY HOMESTEAD	001-3132-0000-000000-001	7,669.45
14154	5	4/19/2022	RC	PROPERTY HOMESTEAD	001-3132-0000-000000-001	34,346.98
14153	1	4/19/2022	RC	VW COUNTY PROPERTY ROLLBACK	001-3131-0000-000000-001	24,208.07
14154	1	4/19/2022	RC	PROPERTY ROLLBACK	001-3131-0000-000000-001	168,039.39
14177	1	4/22/2022	RC	FOUNDATION PYMT	001-3110-0000-000000-001	233,830.21
14146	1	4/8/2022	RC	FOUNDATION PYMT	001-3110-0000-000000-001	233,164.77
14219	1	4/30/2022	RC	REFUND OF PY EXPENDITURE	001-1890-0000-000000-000	104.73
14176	1	4/21/2022	RC	MOTOR FUEL TAX REFUND	001-1890-0000-000000-000	2,525.85
14187	4	4/22/2022	RC	MISC	001-1890-0000-000000-000	400.00
14193	4	4/25/2022	RC	MISC	001-1890-0000-000000-000	536.00
14143	1	4/7/2022	RC	FEES	001-1720-0000-000000-002	124.75
14208	1	4/27/2022	RC	FEES	001-1720-0000-000000-002	252.50
14174	1	4/8/2022	RC	FEES	001-1720-0000-000000-003	186.00
14202	1	4/26/2022	RC	BOOK FEES	001-1720-0000-000000-004	62.00
14185	1	4/22/2022	RC	BOOK FEES	001-1720-0000-000000-003	91.00
14194	1	4/25/2022	RC	BOOK FEES	001-1720-0000-000000-002	70.00
14207	1	4/27/2022	RC	MS BOOK FEES	001-1720-0000-000000-003	288.00
14186	1	4/22/2022	RC	FEES	001-1720-0000-000000-002	101.25
14216	1	4/30/2022	RC	ELEMENTARY BOOK FEES	001-1720-0000-000000-004	190.00
14171	1	4/13/2022	RC	FEES	001-1720-0000-000000-002	371.75
14172	1	4/13/2022	RC	FEES	001-1720-0000-000000-004	400.00
14195	1	4/25/2022	RC	BOOK FEES	001-1720-0000-000000-002	772.05
14115	1	4/2/2022	RC	FEES	001-1720-0000-000000-003	624.50
14187	1	4/22/2022	RC	FEES	001-1720-0000-000000-002	115.25



Start Date: 04/01/22

End Date: 04/30/22

## PARKWAY LOCAL SCHOOL DISTRICT Receipts Ledger Report

Receipt #	Line #	Date	Type	Description	Full Account Code	Amount
14162	1	4/20/2022	RC	FEES	001-1720-0000-000000-002	\$ 18.50
14113	1	4/1/2022	RC	FEES	001-1720-0000-000000-002	15.00
14121	1	4/4/2022	RC	FEES	001-1720-0000-000000-002	354.00
14144	2	4/8/2022	RC	BOOK FEES	001-1720-0000-000000-002	(161.00)
14216	2	4/30/2022	RC	MS BOOK FEES	001-1720-0000-000000-003	123.00
14216	3	4/30/2022	RC	HS BOOK FEES	001-1720-0000-000000-002	188.75
14172	3	4/13/2022	RC	MS BOOK FEES	001-1720-0000-000000-003	103.00
14115	3	4/2/2022	RC	HS FEES	001-1720-0000-000000-002	365.50
14121	5	4/4/2022	RC	MS FEES	001-1720-0000-000000-003	91.00
14214	1	4/30/2022	RC	INTEREST	001-1410-0000-000000-001	1,723.53
14215	4	4/30/2022	RC	INTEREST	001-1410-0000-000000-001	233.97
14177	3	4/22/2022	RC	FOUNDATION PYMT	001-1223-0000-000000-001	0.00
14146	3	4/8/2022	RC	FOUNDATION PYMT	001-1223-0000-000000-001	0.00
14177	2	4/22/2022	RC	FOUNDATION PYMT	001-1221-0000-000000-001	15.48
14146	2	4/8/2022	RC	FOUNDATION PYMT	001-1221-0000-000000-001	0.00
14215	1	4/30/2022	RC	QTLY INCOME TAX COLLECTIONS	001-1130-0000-000000-000	484,511.93
						<b>\$ 1,201,822.85</b>
<b>Fund:</b>	<b>002</b>					
14153	6	4/19/2022	RC	VW COUNTY PROPERTY HOMESTEAD	002-3132-0000-000000-001	1,292.45
14154	6	4/19/2022	RC	PROPERTY HOMESTEAD	002-3132-0000-000000-001	5,788.15
14153	2	4/19/2022	RC	VW COUNTY PROPERTY ROLLBACK	002-3131-0000-000000-001	4,079.55
14154	2	4/19/2022	RC	PROPERTY ROLLBACK	002-3131-0000-000000-001	28,317.90
						<b>\$ 39,478.05</b>
<b>Fund:</b>	<b>003</b>					
14153	7	4/19/2022	RC	VW COUNTY PROPERTY HOMESTEAD	003-3132-0000-000000-001	472.85
14154	7	4/19/2022	RC	PROPERTY HOMESTEAD	003-3132-0000-000000-001	2,117.62
14153	3	4/19/2022	RC	VW COUNTY PROPERTY ROLLBACK	003-3131-0000-000000-001	0.00
						<b>\$ 2,590.47</b>
<b>Fund:</b>	<b>006</b>					
14155	1	4/20/2022	RC	CRRS - BREAKFAST	006-4120-0000-000000-001	7,570.13
14155	2	4/20/2022	RC	CRRS LUNCH	006-4120-0000-000000-001	76,485.75
14144	1	4/8/2022	RC	CAFETERIA	006-1590-0000-000000-001	161.00
14213	1	4/30/2022	RC	APRIL 2022 CAFETERIA PREPAY	006-1590-0000-000000-001	186.80
14203	1	4/30/2022	RC	APRIL 2022 CAFETERIA PREPAY	006-1590-0000-000000-001	3,467.65
14203	3	4/30/2022	RC	APRIL 2022 CAFETERIA ONLINE PREPAY	006-1590-0000-000000-001	1,906.00
14137	8	4/1/2022	RC	CAFETERIA PREPAY	006-1590-0000-000000-001	(8,695.70)
14123	1	4/4/2022	RC	PRESCHOOL MILK/SNACK	006-1559-0000-000000-001	87.21
14203	2	4/30/2022	RC	APRIL 2022 CAFETERIA FOOD SOLD	006-1559-0000-000000-001	1,010.53
14137	7	4/1/2022	RC	ADULT LUNCH	006-1522-0000-000000-001	874.10

Start Date: 04/01/22

End Date: 04/30/22

**PARKWAY LOCAL SCHOOL DISTRICT**  
**Receipts Ledger Report**

Receipt #	Line #	Date	Type	Description	Full Account Code	Amount
14137	2	4/1/2022	RC	ADULT BREAKFAST	006-1521-0000-0000000-001	\$ 1.75
14137	5	4/1/2022	RC	STUDENT MILK	006-1514-0000-0000000-001	129.50
14137	3	4/1/2022	RC	STUDENT ALA CARTE BREAKFAST	006-1513-0000-0000000-001	112.95
14137	6	4/1/2022	RC	STUDENT ALA CARTE LUNCH	006-1513-0000-0000000-001	7,577.40
14137	4	4/1/2022	RC	STUDENT LUNCH	006-1512-0000-0000000-001	0.00
14137	1	4/1/2022	RC	STUDENT BREAKFAST	006-1511-0000-0000000-001	0.00
14214	2	4/30/2022	RC	INTEREST	006-1410-0000-0000000-001	30.32
						<b>\$ 90,905.39</b>
<b>Fund:</b>	<b>007</b>					
14218	1	4/30/2022	RC	REFUND OF PY EXPENDITURE	007-5300-0000-0000000-000	(105.00)
14217	1	4/30/2022	RC	REFUND OF PY EXPENDITURE	007-5300-0000-0000000-000	0.27
						<b>\$ (104.73)</b>
<b>Fund:</b>	<b>011</b>					
14182	1	4/22/2022	RC	COFFEE SHOP SALES	011-1621-0000-0000000-000	749.00
						<b>\$ 749.00</b>
<b>Fund:</b>	<b>018</b>					
14174	2	4/8/2022	RC	CAMP COTUBIC FEES	018-1631-9411-0000000-000	75.00
14174	3	4/8/2022	RC	MISC	018-1890-9410-0000000-000	154.00
14159	2	4/20/2022	RC	MS COMMISSIONS	018-1851-9410-0000000-000	23.01
14163	1	4/20/2022	RC	CAMP COTUBIC FEES	018-1631-9410-0000000-000	150.00
14201	1	4/26/2022	RC	CAMP COTUBIC	018-1631-9410-0000000-000	75.00
14139	1	4/6/2022	RC	CAMP COTUBIC	018-1631-9410-0000000-000	600.00
14125	1	4/5/2022	RC	CAMP COTUBIC	018-1631-9410-0000000-000	300.00
14185	2	4/22/2022	RC	CAMP COTUBIC FEES	018-1631-9410-0000000-000	75.00
14207	2	4/27/2022	RC	CAMP COTUBIC	018-1631-9410-0000000-000	75.00
14212	2	4/30/2022	RC	CAMP COTUBIC FEE	018-1631-9410-0000000-000	(75.00)
14115	2	4/2/2022	RC	CAMP COTUBIC	018-1631-9410-0000000-000	4,125.00
14198	1	4/26/2022	RC	CEDAR POINT TICKETS	018-1890-9405-0000000-000	920.00
14211	1	4/28/2022	RC	MISC	018-1890-9405-0000000-000	16.00
14143	2	4/7/2022	RC	MISC	018-1890-9405-0000000-000	14.00
14208	2	4/27/2022	RC	MISC	018-1890-9405-0000000-000	12.00
14186	2	4/22/2022	RC	MISC	018-1890-9405-0000000-000	28.00
14171	2	4/13/2022	RC	MISC	018-1890-9405-0000000-000	26.00
14187	2	4/22/2022	RC	MISC	018-1890-9405-0000000-000	6.00
14121	2	4/4/2022	RC	MISC	018-1890-9405-0000000-000	18.00
14195	3	4/25/2022	RC	MISC	018-1890-9405-0000000-000	42.00
14216	4	4/30/2022	RC	MISC	018-1890-9405-0000000-000	0.00
14159	1	4/20/2022	RC	HS COMMISSIONS	018-1851-9405-0000000-000	45.70
14159	3	4/20/2022	RC	ES COMMISSIONS	018-1851-9400-0000000-000	54.51

Start Date: 04/01/22

End Date: 04/30/22

## PARKWAY LOCAL SCHOOL DISTRICT Receipts Ledger Report

Receipt #	Line #	Date	Type	Description	Full Account Code	Amount
						<b>\$ 6,759.22</b>
<b>Fund:</b>	<b>020</b>					
14202	2	4/26/2022	RC	PRESCHOOL REGISTRATION	020-1790-0000-000000-004	\$ 25.00
14172	2	4/13/2022	RC	PRESCHOOL REGISTRATION	020-1790-0000-000000-004	225.00
14204	1	4/27/2022	RC	PRESCHOOL TUITION	020-1239-0000-000000-004	1,350.00
14183	1	4/22/2022	RC	PRESCHOOL TUITION	020-1239-0000-000000-004	1,720.00
14164	1	4/13/2022	RC	TUITION	020-1239-0000-000000-004	4,941.00
						<b>\$ 8,261.00</b>
<b>Fund:</b>	<b>034</b>					
14153	8	4/19/2022	RC	VW COUNTY PROPERTY HOMESTEAD	034-3132-0000-000000-001	91.35
14154	8	4/19/2022	RC	PROPERTY HOMESTEAD	034-3132-0000-000000-001	409.08
14153	4	4/19/2022	RC	VW COUNTY PROPERTY ROLLBACK	034-3131-0000-000000-001	288.34
14154	4	4/19/2022	RC	PROPERTY ROLLBACK	034-3131-0000-000000-001	2,001.49
						<b>\$ 2,790.26</b>
<b>Fund:</b>	<b>200</b>					
14184	1	4/22/2022	RC	STRAWBERRY FUNDRAISER	200-1690-9330-000000-002	43.00
14156	1	4/20/2022	RC	STRAWBERRY FUNDRAISER	200-1690-9330-000000-002	641.00
14143	3	4/7/2022	RC	FFA DUES	200-1631-9330-000000-002	25.00
14187	3	4/22/2022	RC	FFA	200-1631-9330-000000-002	25.00
14208	4	4/27/2022	RC	FFA DUES	200-1631-9330-000000-002	50.00
14171	4	4/13/2022	RC	FFA DUES	200-1631-9330-000000-002	50.00
14121	4	4/4/2022	RC	FFA DUES	200-1631-9330-000000-002	25.00
14216	6	4/30/2022	RC	FFA DUES	200-1631-9330-000000-002	0.00
14122	1	4/4/2022	RC	FFA	200-1621-9330-000000-002	563.00
14194	2	4/25/2022	RC	FCCLA DUES	200-1631-9320-000000-002	15.00
14195	2	4/25/2022	RC	FCCLA DUES	200-1631-9320-000000-002	75.00
14208	3	4/27/2022	RC	FCCLA DUES	200-1631-9320-000000-002	30.00
14171	3	4/13/2022	RC	FCCLA DUES	200-1631-9320-000000-002	30.00
14121	3	4/4/2022	RC	FCCLA DUES	200-1631-9320-000000-002	15.00
14216	5	4/30/2022	RC	FCCLA DUES	200-1631-9320-000000-002	0.00
14196	1	4/26/2022	RC	CHOCOLATE FUNDRAISER	200-1690-9025-000000-000	180.00
14197	1	4/26/2022	RC	DUES	200-1631-9024-000000-000	160.00
14190	1	4/25/2022	RC	PROM DATES	200-1690-9023-000000-000	50.00
14189	1	4/25/2022	RC	PROM DATE	200-1690-9023-000000-000	10.00
14199	2	4/26/2022	RC	PROM DATE	200-1690-9023-000000-000	10.00
14200	2	4/26/2022	RC	PROM DATE	200-1690-9023-000000-000	10.00
14166	1	4/13/2022	RC	DUES	200-1631-9023-000000-000	10.00
14209	1	4/28/2022	RC	DUES AND DATES	200-1631-9023-000000-000	110.00
14206	1	4/27/2022	RC	DUES AND PROM DATE	200-1631-9023-000000-000	30.00

Start Date: 04/01/22

End Date: 04/30/22

## PARKWAY LOCAL SCHOOL DISTRICT

### Receipts Ledger Report

Receipt #	Line #	Date	Type	Description	Full Account Code	Amount
14199	1	4/26/2022	RC	DUES	200-1631-9023-000000-000	\$ 30.00
14165	1	4/13/2022	RC	DUES	200-1631-9023-000000-000	60.00
14188	1	4/25/2022	RC	DUES	200-1631-9023-000000-000	40.00
14158	1	4/20/2022	RC	DUES	200-1631-9023-000000-000	60.00
14142	1	4/7/2022	RC	DUES	200-1631-9023-000000-000	120.00
14200	1	4/26/2022	RC	DUES	200-1631-9023-000000-000	20.00
14157	1	4/20/2022	RC	DONATION	200-1820-9022-000000-000	50.00
14140	1	4/7/2022	RC	DUES	200-1631-9022-000000-000	160.00
14116	1	4/4/2022	RC	DUES	200-1631-9022-000000-000	160.00
14168	1	4/13/2022	RC	DUES	200-1631-9022-000000-000	120.00
14169	1	4/13/2022	RC	CEDAR POINT TICKETS	200-1620-9022-000000-000	100.00
14117	1	4/4/2022	RC	SHIRTS	200-1620-9022-000000-000	89.00
14141	1	4/7/2022	RC	SENIOR SHIRTS	200-1620-9022-000000-000	296.00
14118	1	4/4/2022	RC	CEDAR POINT TICKETS	200-1620-9022-000000-000	150.00
14167	1	4/13/2022	RC	SHIRTS	200-1620-9022-000000-000	260.00
						<b>\$ 3,872.00</b>
<b>Fund:</b>	<b>300</b>					
14170	1	4/13/2022	RC	YEARBOOK	300-1621-9680-000000-000	55.00
14111	1	4/1/2022	RC	YEARBOOK	300-1621-9680-000000-000	25.00
14181	1	4/22/2022	RC	YEARBOOK	300-1621-9680-000000-000	110.00
14175	1	4/8/2022	RC	YEARBOOK	300-1621-9680-000000-000	55.00
14112	1	4/1/2022	RC	LOST BOOK	300-1690-9650-000000-002	8.00
14124	1	4/5/2022	RC	LOST BOOK	300-1690-9650-000000-002	17.00
14205	1	4/27/2022	RC	LOST BOOKS	300-1690-9650-000000-002	13.00
14210	1	4/28/2022	RC	RCO DONATION FOR CANDY/POP	300-1820-0000-000000-000	125.00
14191	2	4/25/2022	RC	DONATION	300-1820-0000-000000-000	200.00
14173	1	4/11/2022	RC	CONCESSIONS CLUB VB	300-1625-0000-000000-000	2,336.00
14120	1	4/4/2022	RC	CONCESSIONS CLUB VB	300-1625-0000-000000-000	2,295.00
14160	1	4/20/2022	RC	HS TRACK VS ML AND DSJ	300-1615-0000-000000-000	777.00
14191	1	4/25/2022	RC	JH SB TOURNAMENT	300-1615-0000-000000-000	500.00
14138	1	4/6/2022	RC	HS TRACK VS FR/NB	300-1615-0000-000000-000	855.00
						<b>\$ 7,371.00</b>
<b>Fund:</b>	<b>499</b>					
14180	1	4/26/2022	RC	SCHOOL BUS PROGRAM	499-3220-9022-000000-000	45,000.00
						<b>\$ 45,000.00</b>
<b>Fund:</b>	<b>507</b>					
14148	1	4/13/2022	RC	ARP ESSER	507-4220-9022-000000-000	71,569.00
14149	1	4/14/2022	RC	ESSER II	507-4220-0000-000000-000	27,929.42
						<b>\$ 99,498.42</b>

Start Date: 04/01/22

End Date: 04/30/22

**PARKWAY LOCAL SCHOOL DISTRICT  
Receipts Ledger Report**

Receipt #	Line #	Date	Type	Description	Full Account Code	Amount
<b>Fund:</b>	<b>572</b>					
14150	1	4/14/2022	RC	EOEC	572-4220-9092-000000-000	\$ 499.66
14152	1	4/15/2022	RC	TITLE I	572-4220-9022-000000-000	30,207.69
						<u>\$ 30,707.35</u>
<b>Fund:</b>	<b>584</b>					
14151	1	4/14/2022	RC	TITLE IV-A	584-4220-9022-000000-000	7,335.72
						<u>\$ 7,335.72</u>
<b>Fund:</b>	<b>590</b>					
14147	1	4/14/2022	RC	TITLE II-A	590-4220-9022-000000-000	2,977.05
						<u>\$ 2,977.05</u>
<b>Grand Total</b>						<u>\$ 1,550,013.05</u>

Start Date: 4/1/22

End Date: 4/30/22

**PARKWAY LOCAL SCHOOL DISTRICT**  
**Disbursement Summary Report**

Reference Number	Check Number	Type	Date	Name	Vendor #	Status	Reconcile Date	Void Date	Amount
27012	81444	ACCOUNTS_PAYA BLE	4/29/2022	WALMART COMMUNITY	7477	OUTSTANDING			\$ 1,450.13
27024	81443	ACCOUNTS_PAYA BLE	4/29/2022	SHANNON WAGNER	10864	OUTSTANDING			400.00
27020	81442	ACCOUNTS_PAYA BLE	4/29/2022	MAGIC MOMENT ENTERTAINMENT	13118	OUTSTANDING			525.00
27022	81441	ACCOUNTS_PAYA BLE	4/29/2022	VELOCITY PROMOTIONS, LLC	13052	OUTSTANDING			134.00
27028	81440	ACCOUNTS_PAYA BLE	4/29/2022	PARCHMENT INC.	12774	OUTSTANDING			420.00
27026	81439	ACCOUNTS_PAYA BLE	4/29/2022	OHIO ETHICS COMMISSION	11487	OUTSTANDING			30.00
27030	81438	ACCOUNTS_PAYA BLE	4/29/2022	NORTHWEST OHIO	10438	OUTSTANDING			21.00
27017	81437	ACCOUNTS_PAYA BLE	4/29/2022	JOYCE DICKE	12130	OUTSTANDING			40.95
27018	81436	ACCOUNTS_PAYA BLE	4/29/2022	JONES SCHOOL SUPPLY CO., INC.	6423	OUTSTANDING			166.95
27023	81435	ACCOUNTS_PAYA BLE	4/29/2022	JAMI PONTSLER	12238	OUTSTANDING			19.00
27019	81434	ACCOUNTS_PAYA BLE	4/29/2022	IGS ENERGY	12202	OUTSTANDING			3,819.23
27013	81433	ACCOUNTS_PAYA BLE	4/29/2022	GORDON FOOD SERVICE	1646	OUTSTANDING			4,974.14
27014	81432	ACCOUNTS_PAYA BLE	4/29/2022	GOPHER SPORTS EQUIP.	6200	OUTSTANDING			1,115.97
27015	81431	ACCOUNTS_PAYA BLE	4/29/2022	FLAT LANDS SUPPLY INC	7121	OUTSTANDING			415.69
27029	81430	ACCOUNTS_PAYA BLE	4/29/2022	DESIGNER IMAGING	13054	OUTSTANDING			54.00
27021	81429	ACCOUNTS_PAYA BLE	4/29/2022	DEBRA PIERCE	11368	OUTSTANDING			335.62
27025	81428	ACCOUNTS_PAYA BLE	4/29/2022	BUCKEYE EXTERMINATING, INC.	10471	OUTSTANDING			400.00
27027	81427	ACCOUNTS_PAYA BLE	4/29/2022	BROWN SUPPLY CO	718	OUTSTANDING			627.58
27016	81426	ACCOUNTS_PAYA BLE	4/29/2022	BELNA PETROLEUM INC.	11137	OUTSTANDING			4,204.36
27004	81424	ACCOUNTS_PAYA BLE	4/25/2022	SW OHIO EPC	12750	OUTSTANDING			133,411.04
27005	81423	ACCOUNTS_PAYA BLE	4/25/2022	GRADY ENTERPRISES, INC.	12695	RECONCILED	4/30/2022		337.25
26981	81422	ACCOUNTS_PAYA BLE	4/22/2022	XTRAMATH	13142	OUTSTANDING			500.00

Start Date: 4/1/22

End Date: 4/30/22

## PARKWAY LOCAL SCHOOL DISTRICT

### Disbursement Summary Report

Reference Number	Check Number	Type	Date	Name	Vendor #	Status	Reconcile Date	Void Date	Amount
26993	81421	ACCOUNTS_PAYA BLE	4/22/2022	WeVIDEO INC	13131	OUTSTANDING			\$ 299.00
27002	81420	ACCOUNTS_PAYA BLE	4/22/2022	WEST CENTRAL DAY TREATMENT	10118	RECONCILED	4/30/2022		360.00
26999	81419	ACCOUNTS_PAYA BLE	4/22/2022	WAYNESFIELD GOSHEN	11294	RECONCILED	4/30/2022		175.00
26988	81418	ACCOUNTS_PAYA BLE	4/22/2022	WABASH VALLEY ELECTRIC	13053	RECONCILED	4/30/2022		2,750.65
26976	81417	ACCOUNTS_PAYA BLE	4/22/2022	TREETOP PRODUCTS	12637	RECONCILED	4/30/2022		2,588.82
26998	81416	ACCOUNTS_PAYA BLE	4/22/2022	TEAM FITZ GRAPHICS	12397	RECONCILED	4/30/2022		95.00
27000	81415	ACCOUNTS_PAYA BLE	4/22/2022	STANTON SHEET MUSIC INC	171	RECONCILED	4/30/2022		727.90
26991	81414	ACCOUNTS_PAYA BLE	4/22/2022	SCOTT,SCRIVEN	8306	RECONCILED	4/30/2022		2,115.00
26969	81413	ACCOUNTS_PAYA BLE	4/22/2022	RICK ROEHM	12769	RECONCILED	4/30/2022		67.28
26985	81412	ACCOUNTS_PAYA BLE	4/22/2022	RG COMMUNICATIO NS	12781	OUTSTANDING			807.96
26997	81411	ACCOUNTS_PAYA BLE	4/22/2022	PITNEY BOWES INC	11048	RECONCILED	4/30/2022		452.16
26973	81410	ACCOUNTS_PAYA BLE	4/22/2022	PERRY PRO TECH	6780	RECONCILED	4/30/2022		249.45
26972	81409	ACCOUNTS_PAYA BLE	4/22/2022	NATIONAL FFA ORGANIZATION	7820	RECONCILED	4/30/2022		223.50
26983	81408	ACCOUNTS_PAYA BLE	4/22/2022	MOBYMAX	12317	RECONCILED	4/30/2022		6,094.00
26987	81407	ACCOUNTS_PAYA BLE	4/22/2022	MILLER'S TEXTILE	5686	RECONCILED	4/30/2022		84.20
26980	81406	ACCOUNTS_PAYA BLE	4/22/2022	MERCER COUNTY EDUC.	137	OUTSTANDING			5,963.96
26979	81405	ACCOUNTS_PAYA BLE	4/22/2022	MARION LOCAL SCHOOLS	11937	RECONCILED	4/30/2022		120.00
26971	81404	ACCOUNTS_PAYA BLE	4/22/2022	LEARN WELL	13101	RECONCILED	4/30/2022		179.55
26968	81403	ACCOUNTS_PAYA BLE	4/22/2022	JOHN DIERINGER CONSTRUCTION	12180	RECONCILED	4/30/2022		216.00
26975	81402	ACCOUNTS_PAYA BLE	4/22/2022	HERSHEY CREAMERY CO	12669	RECONCILED	4/30/2022		298.56
26970	81401	ACCOUNTS_PAYA BLE	4/22/2022	HERFF JONES	10152	RECONCILED	4/30/2022		456.92
26978	81400	ACCOUNTS_PAYA BLE	4/22/2022	GRAINGER	11847	RECONCILED	4/30/2022		455.89
26996	81399	ACCOUNTS_PAYA BLE	4/22/2022	GORDON FOOD SERVICE	1646	RECONCILED	4/30/2022		3,986.60

Start Date: 4/1/22

End Date: 4/30/22

**PARKWAY LOCAL SCHOOL DISTRICT**  
**Disbursement Summary Report**

Reference Number	Check Number	Type	Date	Name	Vendor #	Status	Reconcile Date	Void Date	Amount
26982	81398	ACCOUNTS_PAYA BLE	4/22/2022	FOUR-U- PACKAGING	11377	OUTSTANDING			\$ 4,771.83
26990	81397	ACCOUNTS_PAYA BLE	4/22/2022	FORT LORAMIE ATH DEPT	6249	RECONCILED	4/30/2022		125.00
26977	81396	ACCOUNTS_PAYA BLE	4/22/2022	DJ AUTO REPAIR	11138	RECONCILED	4/30/2022		497.95
26995	81395	ACCOUNTS_PAYA BLE	4/22/2022	DELPHOS TENT & AWNING	9058	OUTSTANDING			240.00
27001	81394	ACCOUNTS_PAYA BLE	4/22/2022	DEBRA PIERCE	11368	RECONCILED	4/30/2022		20.00
27003	81393	ACCOUNTS_PAYA BLE	4/22/2022	SCHENKEL'S DAIRY	12786	RECONCILED	4/30/2022		3,438.27
26984	81392	ACCOUNTS_PAYA BLE	4/22/2022	BETSEY'S BOUQUETS	12854	OUTSTANDING			20.00
26989	81391	ACCOUNTS_PAYA BLE	4/22/2022	BARRY'S MARKET INC	5770	OUTSTANDING			15.08
26986	81390	ACCOUNTS_PAYA BLE	4/22/2022	BANK OF NEW YORK MELLON	12029	OUTSTANDING			76,300.00
26994	81389	ACCOUNTS_PAYA BLE	4/22/2022	APPLE COMPUTER, INC.	8492	RECONCILED	4/30/2022		1,194.00
26974	81388	ACCOUNTS_PAYA BLE	4/22/2022	AMY BUENING	13063	RECONCILED	4/30/2022		1,228.66
26992	81387	ACCOUNTS_PAYA BLE	4/22/2022	A-1 CONCRETE LEVELING	13016	RECONCILED	4/30/2022		8,640.00
26960	81385	ACCOUNTS_PAYA BLE	4/13/2022	TERI SAMPLES	9311	OUTSTANDING			145.00
26951	81384	ACCOUNTS_PAYA BLE	4/13/2022	ROCKFORD CARRY OUT	873	RECONCILED	4/30/2022		865.00
26953	81383	ACCOUNTS_PAYA BLE	4/13/2022	RIGHTWAY FOOD SERVICE	7066	RECONCILED	4/30/2022		1,459.65
26959	81382	ACCOUNTS_PAYA BLE	4/13/2022	MERCER HEALTH	12401	RECONCILED	4/30/2022		273.00
26956	81381	ACCOUNTS_PAYA BLE	4/13/2022	JW PEPPER	12077	RECONCILED	4/30/2022		69.00
26957	81380	ACCOUNTS_PAYA BLE	4/13/2022	HEALTHCARE BILLING SERVICES	11711	RECONCILED	4/30/2022		477.72
26950	81379	ACCOUNTS_PAYA BLE	4/13/2022	GORDON FOOD SERVICE	1646	RECONCILED	4/30/2022		1,827.26
26961	81378	ACCOUNTS_PAYA BLE	4/13/2022	FRIENDS OFFICE	9200	RECONCILED	4/30/2022		176.40
26949	81377	ACCOUNTS_PAYA BLE	4/13/2022	COTTERMAN & COMPANY INC	9146	RECONCILED	4/30/2022		360.16
26955	81376	ACCOUNTS_PAYA BLE	4/13/2022	COMMERCIAL FOOD SYSTEMS, INC.	11087	RECONCILED	4/30/2022		1,778.50
26952	81375	ACCOUNTS_PAYA	4/13/2022	BELNA	11137	RECONCILED	4/30/2022		3,941.29



Start Date: 4/1/22

End Date: 4/30/22

**PARKWAY LOCAL SCHOOL DISTRICT**  
**Disbursement Summary Report**

Reference Number	Check Number	Type	Date	Name	Vendor #	Status	Reconcile Date	Void Date	Amount
		BLE		PETROLEUM INC.					
26958	81374	ACCOUNTS_PAYA	4/13/2022	AUNT MILLIE'S	11150	RECONCILED	4/30/2022		\$ 618.63
		BLE		BAKERIES					
26954	81373	ACCOUNTS_PAYA	4/13/2022	WAIBEL ENERGY	11125	RECONCILED	4/30/2022		6,923.00
		BLE		SYSTEMS					
26922	81372	ACCOUNTS_PAYA	4/8/2022	WABASH VALLEY	13053	RECONCILED	4/30/2022		115.55
		BLE		ELECTRIC					
26911	81371	ACCOUNTS_PAYA	4/8/2022	VILLAGE OF	7594	RECONCILED	4/30/2022		2,226.78
		BLE		ROCKFORD					
26917	81370	ACCOUNTS_PAYA	4/8/2022	VAN WERT	8270	RECONCILED	4/30/2022		563.03
		BLE		PROPANE INC					
26939	81369	ACCOUNTS_PAYA	4/8/2022	VAN WERT CITY	11047	RECONCILED	4/30/2022		50.00
		BLE		SCHOOLS					
26909	81368	ACCOUNTS_PAYA	4/8/2022	UNITED ART AND	8074	RECONCILED	4/30/2022		471.60
		BLE		EDUCATION					
26932	81367	ACCOUNTS_PAYA	4/8/2022	TREASURER,	6085	RECONCILED	4/30/2022		6,051.60
		BLE		STATE OF OHIO					
26942	81366	ACCOUNTS_PAYA	4/8/2022	TFN CAMPS &	13036	RECONCILED	4/30/2022		700.00
		BLE		CLINICS					
26926	81365	ACCOUNTS_PAYA	4/8/2022	ST HENRY TILE &	2185	RECONCILED	4/30/2022		426.00
		BLE		READYMIX					
26918	81364	ACCOUNTS_PAYA	4/8/2022	SPHERO, INC.	13136	RECONCILED	4/30/2022		3,311.72
		BLE							
26910	81363	ACCOUNTS_PAYA	4/8/2022	RODOC LEASING	10299	RECONCILED	4/30/2022		2,553.89
		BLE		SALES &					
		BLE		SERVICE					
26912	81362	ACCOUNTS_PAYA	4/8/2022	REA &	10816	RECONCILED	4/30/2022		1,875.00
		BLE		ASSOCIATES					
26916	81361	ACCOUNTS_PAYA	4/8/2022	PHOTO STAR	500	RECONCILED	4/30/2022		400.00
		BLE							
26941	81360	ACCOUNTS_PAYA	4/8/2022	PETS-N-MORE	9768	OUTSTANDING			3.99
		BLE							
26913	81359	ACCOUNTS_PAYA	4/8/2022	OHIO FFA	6701	RECONCILED	4/30/2022		80.00
		BLE		ASSOCIATION					
26931	81358	ACCOUNTS_PAYA	4/8/2022	NORTHWEST	10438	RECONCILED	4/30/2022		184.00
		BLE		OHIO					
26934	81357	ACCOUNTS_PAYA	4/8/2022	MERCER	385	RECONCILED	4/30/2022		32.85
		BLE		LANDMARK, INC.					
26925	81356	ACCOUNTS_PAYA	4/8/2022	MAHARG, INC.	6065	RECONCILED	4/30/2022		804.80
		BLE							
26929	81355	ACCOUNTS_PAYA	4/8/2022	LIMA SPORTING	6232	RECONCILED	4/30/2022		218.00
		BLE		GOODS					
26907	81354	ACCOUNTS_PAYA	4/8/2022	LEFELD	130	RECONCILED	4/30/2022		351.30
		BLE		WELDING &					
		BLE		SUPPLIES, INC					
26927	81353	ACCOUNTS_PAYA	4/8/2022	JOYCE DICKE	12130	RECONCILED	4/30/2022		81.90
		BLE							

Start Date: 4/1/22

End Date: 4/30/22

**PARKWAY LOCAL SCHOOL DISTRICT**  
**Disbursement Summary Report**

Reference Number	Check Number	Type	Date	Name	Vendor #	Status	Reconcile Date	Void Date	Amount
26940	81352	ACCOUNTS_PAYA BLE	4/8/2022	JACKSON GARAGE	9794	RECONCILED	4/30/2022		\$ 204.54
26938	81351	ACCOUNTS_PAYA BLE	4/8/2022	HOUSTON HIGH SCHOOL	12455	RECONCILED	4/30/2022		170.00
26924	81350	ACCOUNTS_PAYA BLE	4/8/2022	HAJOCA CORPORATION	11468	RECONCILED	4/30/2022		254.05
26921	81349	ACCOUNTS_PAYA BLE	4/8/2022	GORDON FOOD SERVICE	1646	RECONCILED	4/30/2022		5,324.06
26920	81348	ACCOUNTS_PAYA BLE	4/8/2022	GARMANN- MILLER ARCHITECTS	9930	RECONCILED	4/30/2022		1,125.00
26933	81347	ACCOUNTS_PAYA BLE	4/8/2022	FINDLAY INTERPRETING SERVICES FOR DEAF	13073	RECONCILED	4/30/2022		7,785.00
26923	81346	ACCOUNTS_PAYA BLE	4/8/2022	ESGI, LLC	13058	RECONCILED	4/30/2022		1,344.00
26928	81345	ACCOUNTS_PAYA BLE	4/8/2022	EMS LINQ INC	11114	RECONCILED	4/30/2022		371.83
26930	81344	ACCOUNTS_PAYA BLE	4/8/2022	DICKMAN INDUSTRIAL &	11243	RECONCILED	4/30/2022		409.20
26937	81343	ACCOUNTS_PAYA BLE	4/8/2022	DAN WILLIAMSON	12976	RECONCILED	4/30/2022		40.00
26935	81342	ACCOUNTS_PAYA BLE	4/8/2022	COLUMBUS CLAY COMPANY	9984	RECONCILED	4/30/2022		330.00
26919	81341	ACCOUNTS_PAYA BLE	4/8/2022	CENTRAL INDIANA HARDWARE	10985	RECONCILED	4/30/2022		16.30
26915	81340	ACCOUNTS_PAYA BLE	4/8/2022	CELINA ACE HARDWARE	8715	RECONCILED	4/30/2022		271.62
26908	81339	ACCOUNTS_PAYA BLE	4/8/2022	BELNA PETROLEUM INC.	11137	RECONCILED	4/30/2022		1,882.02
26914	81338	ACCOUNTS_PAYA BLE	4/8/2022	ALL PHASE - LIMA	11285	RECONCILED	4/30/2022		6,652.34
26936	81337	ACCOUNTS_PAYA BLE	4/8/2022	ALAN POST	7809	RECONCILED	4/30/2022		90.44
27006	0	ACCOUNTS_PAYA BLE	4/27/2022	STATE OF OHIO	900002	RECONCILED	4/27/2022		86,086.00
26963	0	ACCOUNTS_PAYA BLE	4/20/2022	PARKWAY LOCAL SCHOOL- MEDICARE	900001	RECONCILED	4/20/2022		3,880.63
26964	0	ACCOUNTS_PAYA BLE	4/20/2022	SCHOOL EMPLOYEES RETIREMENT SY	900733	RECONCILED	4/20/2022		646.03
26965	0	ACCOUNTS_PAYA BLE	4/20/2022	STRS	900734	RECONCILED	4/20/2022		4,607.49
26966	0	ACCOUNTS_PAYA	4/19/2022	PARKWAY	900016	RECONCILED	4/19/2022		5,000.00

Start Date: 4/1/22

End Date: 4/30/22

**PARKWAY LOCAL SCHOOL DISTRICT**  
**Disbursement Summary Report**

Reference Number	Check Number	Type	Date	Name	Vendor #	Status	Reconcile Date	Void Date	Amount
26946		BLE 0 ACCOUNTS_PAYA	4/13/2022	ATHLETIC DAYTON POWER & LIGHT CO	900729	RECONCILED	4/13/2022		\$ 10,117.38
26945		BLE 0 ACCOUNTS_PAYA	4/13/2022	WABASH COMMUNICATIO NS	900731	RECONCILED	4/13/2022		340.16
26948		BLE 0 ACCOUNTS_PAYA	4/13/2022	DOMINION EAST OHIO	8609	RECONCILED	4/13/2022		2,324.71
26943		BLE 0 ACCOUNTS_PAYA	4/13/2022	VERIZON	900732	RECONCILED	4/13/2022		111.51
26947		BLE 0 ACCOUNTS_PAYA	4/13/2022	U.S. BANK EQUIPMENT FINANCE	900738	RECONCILED	4/13/2022		3,894.01
26944		BLE 0 ACCOUNTS_PAYA	4/13/2022	DOMINION EAST OHIO	8609	VOID		4/13/2022	2,324.71
26904		BLE 0 ACCOUNTS_PAYA	4/5/2022	SCHOOL EMPLOYEES RETIREMENT SY	900733	RECONCILED	4/5/2022		646.03
26902		BLE 0 ACCOUNTS_PAYA	4/5/2022	PARKWAY LOCAL SCHOOL- MEDICARE	900001	RECONCILED	4/5/2022		4,984.57
26905		BLE 0 ACCOUNTS_PAYA	4/5/2022	AMAZON CAPITAL SERVICES, INC	900735	RECONCILED	4/5/2022		2,164.73
26906		BLE 0 ACCOUNTS_PAYA	4/5/2022	CHASE BANK	900737	RECONCILED	4/5/2022		3,115.31
26903		BLE 0 ACCOUNTS_PAYA	4/5/2022	STRS	900734	RECONCILED	4/5/2022		4,831.14
<b>Grand Total</b>									<b>\$ 479,421.53</b>

# Report Options

**Report Generated By:** pw\_treas

**Report Generated On:** 5/4/22 1:07 PM

## Report Parameters

<b>Page Size</b>	LETTER
<b>Page Orientation</b>	LANDSCAPE
<b>Output Format</b>	PDF
<b>Template Name</b>	Appropriations Resolution Report
<b>Suppress Detail</b>	false
<b>Show Options</b>	true

## Query Parameters

(fiscalYear)	Fiscal Year 2022
(reportType)	Report Type CURRENT_YEAR_APPROPRIATIONS
(includeZeroAmounts)	Include Zero Amounts false
(recap)	Summarize Recap by Fund? true

## PARKWAY LOCAL SCHOOL DISTRICT Appropriations Resolution Report

Rev. Code Sec. 5705.38

Fiscal Year: 2022

PARKWAY LOCAL SCHOOL DISTRICT

Include Zero Balance Accounts: false

	Total Appropriation	Prior FY Carry Over	Appropriations
001 GENERAL	\$ 12,351,352.54	\$ 78,713.05	\$ 12,430,065.59
001 0000 GENERAL FUND	\$ 12,351,352.54	\$ 78,713.05	\$ 12,430,065.59
1000 INSTRUCTION	\$ 7,952,250.49	\$ 22,669.38	\$ 7,974,919.87
1100 REGULAR INSTRUCTION	\$ 5,777,578.35	\$ 21,920.39	\$ 5,799,498.74
100 PERSONAL SERVICES - SALARIES	\$ 3,429,900.27	\$ 0.00	\$ 3,429,900.27
200 EMPLOYEES RETIRE. & INSUR. BEN	\$ 1,591,677.89	\$ 9,025.00	\$ 1,600,702.89
400 PURCHASED SERVICES	\$ 453,972.79	\$ 4,302.00	\$ 458,274.79
500 SUPPLIES AND MATERIALS	\$ 209,730.49	\$ 7,133.39	\$ 216,863.88
600 CAPITAL OUTLAY	\$ 91,874.76	\$ 1,460.00	\$ 93,334.76
800 MISCELLANEOUS OBJECTS	\$ 422.15	\$ 0.00	\$ 422.15
1200 SPECIAL INSTRUCTION	\$ 1,931,621.84	\$ 748.99	\$ 1,932,370.83
100 PERSONAL SERVICES - SALARIES	\$ 881,139.58	\$ 0.00	\$ 881,139.58
200 EMPLOYEES RETIRE. & INSUR. BEN	\$ 384,376.23	\$ 80.00	\$ 384,456.23
400 PURCHASED SERVICES	\$ 296,285.17	\$ 0.00	\$ 296,285.17
500 SUPPLIES AND MATERIALS	\$ 10,712.51	\$ 668.99	\$ 11,381.50
600 CAPITAL OUTLAY	\$ 2,600.00	\$ 0.00	\$ 2,600.00
800 MISCELLANEOUS OBJECTS	\$ 356,508.35	\$ 0.00	\$ 356,508.35
1300 VOCATIONAL INSTRUCTION	\$ 243,050.30	\$ 0.00	\$ 243,050.30
100 PERSONAL SERVICES - SALARIES	\$ 152,432.34	\$ 0.00	\$ 152,432.34
200 EMPLOYEES RETIRE. & INSUR. BEN	\$ 79,340.96	\$ 0.00	\$ 79,340.96
400 PURCHASED SERVICES	\$ 495.00	\$ 0.00	\$ 495.00
500 SUPPLIES AND MATERIALS	\$ 10,782.00	\$ 0.00	\$ 10,782.00
2000 SUPPORTING SERVICES	\$ 3,973,766.93	\$ 55,568.67	\$ 4,029,335.60
2100 SUPPORT SERVICES - PUPILS	\$ 59,594.62	\$ 35.00	\$ 59,629.62
100 PERSONAL SERVICES - SALARIES	\$ 40,243.59	\$ 0.00	\$ 40,243.59
200 EMPLOYEES RETIRE. & INSUR. BEN	\$ 6,315.21	\$ 0.00	\$ 6,315.21
400 PURCHASED SERVICES	\$ 2,920.00	\$ 35.00	\$ 2,955.00
500 SUPPLIES AND MATERIALS	\$ 8,115.82	\$ 0.00	\$ 8,115.82
600 CAPITAL OUTLAY	\$ 2,000.00	\$ 0.00	\$ 2,000.00
2200 SUPP SERV- INSTRUCTIONAL STAFF	\$ 501.67	\$ 0.00	\$ 501.67
200 EMPLOYEES RETIRE. & INSUR. BEN	\$ 325.26	\$ 0.00	\$ 325.26
500 SUPPLIES AND MATERIALS	\$ 176.41	\$ 0.00	\$ 176.41
2300 SUPPORT SERV.-BD. OF EDUCATION	\$ 113,472.10	\$ (14.70)	\$ 113,457.40
100 PERSONAL SERVICES - SALARIES	\$ 7,875.00	\$ 0.00	\$ 7,875.00
200 EMPLOYEES RETIRE. & INSUR. BEN	\$ 14,613.10	\$ (14.70)	\$ 14,598.40
400 PURCHASED SERVICES	\$ 85,600.00	\$ 0.00	\$ 85,600.00
800 MISCELLANEOUS OBJECTS	\$ 5,384.00	\$ 0.00	\$ 5,384.00

## PARKWAY LOCAL SCHOOL DISTRICT Appropriations Resolution Report

Rev. Code Sec. 5705.38

Fiscal Year: 2022

PARKWAY LOCAL SCHOOL DISTRICT

Include Zero Balance Accounts: false

	Total Appropriation	Prior FY Carry Over	Appropriations
2400 SUPPORT SERV- ADMINISTRATIVE	\$ 911,792.05	\$ 110.98	\$ 911,903.03
100 PERSONAL SERVICES - SALARIES	\$ 550,199.58	\$ 0.00	\$ 550,199.58
200 EMPLOYEES RETIRE. & INSUR. BEN	\$ 331,148.93	\$ 0.00	\$ 331,148.93
400 PURCHASED SERVICES	\$ 25,230.00	\$ 0.00	\$ 25,230.00
500 SUPPLIES AND MATERIALS	\$ 2,893.54	\$ 110.98	\$ 3,004.52
800 MISCELLANEOUS OBJECTS	\$ 2,320.00	\$ 0.00	\$ 2,320.00
2500 FISCAL SERVICES	\$ 501,729.00	\$ 0.00	\$ 501,729.00
100 PERSONAL SERVICES - SALARIES	\$ 149,943.50	\$ 0.00	\$ 149,943.50
200 EMPLOYEES RETIRE. & INSUR. BEN	\$ 73,525.76	\$ 0.00	\$ 73,525.76
400 PURCHASED SERVICES	\$ 13,274.36	\$ 0.00	\$ 13,274.36
500 SUPPLIES AND MATERIALS	\$ 13,547.50	\$ 0.00	\$ 13,547.50
800 MISCELLANEOUS OBJECTS	\$ 251,437.88	\$ 0.00	\$ 251,437.88
2600 SUPPORT SERVICES - BUSINESS	\$ 15,000.00	\$ 0.00	\$ 15,000.00
400 PURCHASED SERVICES	\$ 15,000.00	\$ 0.00	\$ 15,000.00
2700 OPERATION & MAINT OF PLANT SER	\$ 1,620,217.03	\$ 55,437.39	\$ 1,675,654.42
100 PERSONAL SERVICES - SALARIES	\$ 449,724.40	\$ 0.00	\$ 449,724.40
200 EMPLOYEES RETIRE. & INSUR. BEN	\$ 218,579.53	\$ 0.00	\$ 218,579.53
400 PURCHASED SERVICES	\$ 540,415.02	\$ 25,996.00	\$ 566,411.02
500 SUPPLIES AND MATERIALS	\$ 141,872.87	\$ 83.60	\$ 141,956.47
600 CAPITAL OUTLAY	\$ 268,975.21	\$ 29,357.79	\$ 298,333.00
800 MISCELLANEOUS OBJECTS	\$ 650.00	\$ 0.00	\$ 650.00
2800 SUPPORT SERV - PUPIL TRANSPOR.	\$ 706,260.20	\$ 0.00	\$ 706,260.20
100 PERSONAL SERVICES - SALARIES	\$ 257,331.90	\$ 0.00	\$ 257,331.90
200 EMPLOYEES RETIRE. & INSUR. BEN	\$ 50,362.01	\$ 0.00	\$ 50,362.01
400 PURCHASED SERVICES	\$ 150,514.89	\$ 0.00	\$ 150,514.89
500 SUPPLIES AND MATERIALS	\$ 103,281.40	\$ 0.00	\$ 103,281.40
600 CAPITAL OUTLAY	\$ 144,770.00	\$ 0.00	\$ 144,770.00
2900 SUPPORT SERVICES - CENTRAL	\$ 45,200.26	\$ 0.00	\$ 45,200.26
100 PERSONAL SERVICES - SALARIES	\$ 34,570.06	\$ 0.00	\$ 34,570.06
200 EMPLOYEES RETIRE. & INSUR. BEN	\$ 5,230.20	\$ 0.00	\$ 5,230.20
400 PURCHASED SERVICES	\$ 5,400.00	\$ 0.00	\$ 5,400.00
4000 EXTRA CURRICULAR ACTIVITIES	\$ 303,602.43	\$ 0.00	\$ 303,602.43
4100 ACADEMIC & SUBJECT ORIENTED	\$ 47,886.64	\$ 0.00	\$ 47,886.64
100 PERSONAL SERVICES - SALARIES	\$ 41,795.96	\$ 0.00	\$ 41,795.96
200 EMPLOYEES RETIRE. & INSUR. BEN	\$ 6,090.68	\$ 0.00	\$ 6,090.68
4500 SPORT ORIENTED ACTIVITIES	\$ 255,715.79	\$ 0.00	\$ 255,715.79
100 PERSONAL SERVICES - SALARIES	\$ 214,786.32	\$ 0.00	\$ 214,786.32

## PARKWAY LOCAL SCHOOL DISTRICT Appropriations Resolution Report

Rev. Code Sec. 5705.38

Fiscal Year: 2022

PARKWAY LOCAL SCHOOL DISTRICT

Include Zero Balance Accounts: false

	Total Appropriation	Prior FY Carry Over	Appropriations
200 EMPLOYEES RETIRE. & INSUR. BEN	\$ 35,929.47	\$ 0.00	\$ 35,929.47
400 PURCHASED SERVICES	\$ 5,000.00	\$ 0.00	\$ 5,000.00
5000 FACILITIES ACQUI. & CONSTRUCT.	\$ 106,718.43	\$ 475.00	\$ 107,193.43
5200 SITE IMPROVEMENT SERVICES	\$ 96,718.43	\$ 475.00	\$ 97,193.43
600 CAPITAL OUTLAY	\$ 96,718.43	\$ 475.00	\$ 97,193.43
5300 ARCHITECTURE & ENGINEERING SER	\$ 10,000.00	\$ 0.00	\$ 10,000.00
400 PURCHASED SERVICES	\$ 10,000.00	\$ 0.00	\$ 10,000.00
7000 OTHER USES OF FUNDS	\$ 15,014.26	\$ 0.00	\$ 15,014.26
7200 TRANSFERS	\$ 15,014.26	\$ 0.00	\$ 15,014.26
900 OTHER USES OF FUNDS	\$ 15,014.26	\$ 0.00	\$ 15,014.26
002 BOND RETIREMENT	\$ 750,053.26	\$ 0.00	\$ 750,053.26
002 0000 BOND FUND	\$ 750,053.26	\$ 0.00	\$ 750,053.26
2000 SUPPORTING SERVICES	\$ 15,015.00	\$ 0.00	\$ 15,015.00
2500 FISCAL SERVICES	\$ 15,015.00	\$ 0.00	\$ 15,015.00
800 MISCELLANEOUS OBJECTS	\$ 15,015.00	\$ 0.00	\$ 15,015.00
6000 DEBT SERVICE	\$ 735,038.26	\$ 0.00	\$ 735,038.26
6100 REPAYMENT OF DEBT	\$ 735,038.26	\$ 0.00	\$ 735,038.26
810 REDEMPTION OF PRINCIPAL	\$ 179,711.48	\$ 0.00	\$ 179,711.48
820 INTEREST	\$ 555,326.78	\$ 0.00	\$ 555,326.78
003 PERMANENT IMPROVEMENT	\$ 208,945.00	\$ 39,015.00	\$ 247,960.00
003 0000 PERMANENT IMPROVEMENT	\$ 208,945.00	\$ 39,015.00	\$ 247,960.00
2000 SUPPORTING SERVICES	\$ 132,770.15	\$ 2,500.00	\$ 135,270.15
2500 FISCAL SERVICES	\$ 6,145.00	\$ 0.00	\$ 6,145.00
800 MISCELLANEOUS OBJECTS	\$ 6,145.00	\$ 0.00	\$ 6,145.00
2700 OPERATION & MAINT OF PLANT SER	\$ 30,785.19	\$ 2,500.00	\$ 33,285.19
400 PURCHASED SERVICES	\$ (2,200.00)	\$ 2,500.00	\$ 300.00
600 CAPITAL OUTLAY	\$ 32,985.19	\$ 0.00	\$ 32,985.19
2800 SUPPORT SERV - PUPIL TRANSPOR.	\$ 95,839.96	\$ 0.00	\$ 95,839.96
600 CAPITAL OUTLAY	\$ 95,839.96	\$ 0.00	\$ 95,839.96
5000 FACILITIES ACQUI. & CONSTRUCT.	\$ 76,174.85	\$ 36,515.00	\$ 112,689.85
5200 SITE IMPROVEMENT SERVICES	\$ 74,174.85	\$ 36,515.00	\$ 110,689.85
600 CAPITAL OUTLAY	\$ 74,174.85	\$ 36,515.00	\$ 110,689.85
5300 ARCHITECTURE & ENGINEERING SER	\$ 2,000.00	\$ 0.00	\$ 2,000.00
400 PURCHASED SERVICES	\$ 2,000.00	\$ 0.00	\$ 2,000.00
006 FOOD SERVICE	\$ 469,137.24	\$ 33.93	\$ 469,171.17
006 0000 FOOD SERVICE	\$ 469,137.24	\$ 33.93	\$ 469,171.17
3000 OPERATION OF NON-INSTR/SHARED	\$ 469,137.24	\$ 33.93	\$ 469,171.17

PARKWAY LOCAL SCHOOL DISTRICT
Appropriations Resolution Report

Rev. Code Sec. 5705.38

Fiscal Year: 2022

PARKWAY LOCAL SCHOOL DISTRICT

Include Zero Balance Accounts: false

Table with 5 columns: Description, Total Appropriation, Prior FY Carry Over, and Appropriations. Rows include categories like 3100 FOOD SERVICES OPERATIONS, 007 SPECIAL TRUST, 011 ROTARY-SPECIAL SERVICES, and 018 PUBLIC SCHOOL SUPPORT.



## PARKWAY LOCAL SCHOOL DISTRICT Appropriations Resolution Report

Rev. Code Sec. 5705.38

Fiscal Year: 2022

PARKWAY LOCAL SCHOOL DISTRICT

Include Zero Balance Accounts: false

	Total Appropriation	Prior FY Carry Over	Appropriations
018 9405 HS PRINCIPAL PSS	\$ 6,068.14	\$ 30.00	\$ 6,098.14
2000 SUPPORTING SERVICES	\$ 6,068.14	\$ 30.00	\$ 6,098.14
2400 SUPPORT SERV- ADMINISTRATIVE	\$ 6,068.14	\$ 30.00	\$ 6,098.14
800 MISCELLANEOUS OBJECTS	\$ 6,068.14	\$ 30.00	\$ 6,098.14
018 9410 MS PRINCIPAL PSS	\$ 34,642.66	\$ 4,973.00	\$ 39,615.66
2000 SUPPORTING SERVICES	\$ 34,642.66	\$ 4,973.00	\$ 39,615.66
2400 SUPPORT SERV- ADMINISTRATIVE	\$ 34,642.66	\$ 4,973.00	\$ 39,615.66
800 MISCELLANEOUS OBJECTS	\$ 34,642.66	\$ 4,973.00	\$ 39,615.66
018 9411 WASHINGTON DC	\$ 56,087.12	\$ 0.00	\$ 56,087.12
2000 SUPPORTING SERVICES	\$ 56,087.12	\$ 0.00	\$ 56,087.12
2400 SUPPORT SERV- ADMINISTRATIVE	\$ 56,087.12	\$ 0.00	\$ 56,087.12
800 MISCELLANEOUS OBJECTS	\$ 56,087.12	\$ 0.00	\$ 56,087.12
019 OTHER GRANT	\$ 21,000.00	\$ 0.00	\$ 21,000.00
019 9500 WATCH TV TECHNOLOGY	\$ 21,000.00	\$ 0.00	\$ 21,000.00
1000 INSTRUCTION	\$ 21,000.00	\$ 0.00	\$ 21,000.00
1100 REGULAR INSTRUCTION	\$ 21,000.00	\$ 0.00	\$ 21,000.00
500 SUPPLIES AND MATERIALS	\$ 9,213.74	\$ 0.00	\$ 9,213.74
600 CAPITAL OUTLAY	\$ 11,786.26	\$ 0.00	\$ 11,786.26
020 SPECIAL ENTERPRISE FUND	\$ 51,544.23	\$ 0.00	\$ 51,544.23
020 0000 PRESCHOOL	\$ 51,544.23	\$ 0.00	\$ 51,544.23
1000 INSTRUCTION	\$ 50,975.15	\$ 0.00	\$ 50,975.15
1100 REGULAR INSTRUCTION	\$ 50,975.15	\$ 0.00	\$ 50,975.15
100 PERSONAL SERVICES - SALARIES	\$ 32,608.91	\$ 0.00	\$ 32,608.91
200 EMPLOYEES RETIRE. & INSUR. BEN	\$ 17,286.77	\$ 0.00	\$ 17,286.77
500 SUPPLIES AND MATERIALS	\$ 1,079.47	\$ 0.00	\$ 1,079.47
2000 SUPPORTING SERVICES	\$ 569.08	\$ 0.00	\$ 569.08
2100 SUPPORT SERVICES - PUPILS	\$ 569.08	\$ 0.00	\$ 569.08
500 SUPPLIES AND MATERIALS	\$ 569.08	\$ 0.00	\$ 569.08
022 DISTRICT CUSTODIAL	\$ 1,200.00	\$ 0.00	\$ 1,200.00
022 9601 OHSAA VOLLEYBALL TOURNAMENT	\$ 300.00	\$ 0.00	\$ 300.00
4000 EXTRA CURRICULAR ACTIVITIES	\$ 300.00	\$ 0.00	\$ 300.00
4500 SPORT ORIENTED ACTIVITIES	\$ 300.00	\$ 0.00	\$ 300.00
100 PERSONAL SERVICES - SALARIES	\$ 232.00	\$ 0.00	\$ 232.00
200 EMPLOYEES RETIRE. & INSUR. BEN	\$ 16.42	\$ 0.00	\$ 16.42
400 PURCHASED SERVICES	\$ 51.58	\$ 0.00	\$ 51.58
022 9701 OHSAA SOFTBALL TOURNAMENT	\$ 550.00	\$ 0.00	\$ 550.00
4000 EXTRA CURRICULAR ACTIVITIES	\$ 550.00	\$ 0.00	\$ 550.00

## PARKWAY LOCAL SCHOOL DISTRICT Appropriations Resolution Report

Rev. Code Sec. 5705.38

Fiscal Year: 2022

PARKWAY LOCAL SCHOOL DISTRICT

Include Zero Balance Accounts: false

	Total Appropriation	Prior FY Carry Over	Appropriations
4500 SPORT ORIENTED ACTIVITIES	\$ 550.00	\$ 0.00	\$ 550.00
100 PERSONAL SERVICES - SALARIES	\$ 328.50	\$ 0.00	\$ 328.50
200 EMPLOYEES RETIRE. & INSUR. BEN	\$ 7.63	\$ 0.00	\$ 7.63
400 PURCHASED SERVICES	\$ 213.87	\$ 0.00	\$ 213.87
022 9901 OHSAA BASKETBALL TOURNAMENT	\$ 350.00	\$ 0.00	\$ 350.00
4000 EXTRA CURRICULAR ACTIVITIES	\$ 350.00	\$ 0.00	\$ 350.00
4500 SPORT ORIENTED ACTIVITIES	\$ 350.00	\$ 0.00	\$ 350.00
100 PERSONAL SERVICES - SALARIES	\$ 344.64	\$ 0.00	\$ 344.64
200 EMPLOYEES RETIRE. & INSUR. BEN	\$ 5.36	\$ 0.00	\$ 5.36
034 CLASSROOM FACILITIES MAINT.	\$ 44,905.00	\$ 12,940.00	\$ 57,845.00
034 0000 CLASSROOM FAC. MAINT.	\$ 44,905.00	\$ 12,940.00	\$ 57,845.00
2000 SUPPORTING SERVICES	\$ 44,905.00	\$ 12,940.00	\$ 57,845.00
2500 FISCAL SERVICES	\$ 1,110.00	\$ 0.00	\$ 1,110.00
800 MISCELLANEOUS OBJECTS	\$ 1,110.00	\$ 0.00	\$ 1,110.00
2700 OPERATION & MAINT OF PLANT SER	\$ 43,795.00	\$ 12,940.00	\$ 56,735.00
400 PURCHASED SERVICES	\$ 25,771.68	\$ 6,350.00	\$ 32,121.68
500 SUPPLIES AND MATERIALS	\$ 18,023.32	\$ 6,590.00	\$ 24,613.32
200 STUDENT MANAGED ACTIVITY	\$ 44,960.27	\$ 1,200.00	\$ 46,160.27
200 9020 CLASS OF 2020	\$ 3,238.86	\$ 0.00	\$ 3,238.86
7000 OTHER USES OF FUNDS	\$ 3,238.86	\$ 0.00	\$ 3,238.86
7200 TRANSFERS	\$ 3,238.86	\$ 0.00	\$ 3,238.86
900 OTHER USES OF FUNDS	\$ 3,238.86	\$ 0.00	\$ 3,238.86
200 9021 CLASS OF 2021	\$ 2,548.01	\$ 0.00	\$ 2,548.01
7000 OTHER USES OF FUNDS	\$ 2,548.01	\$ 0.00	\$ 2,548.01
7200 TRANSFERS	\$ 2,548.01	\$ 0.00	\$ 2,548.01
900 OTHER USES OF FUNDS	\$ 2,548.01	\$ 0.00	\$ 2,548.01
200 9022 CLASS OF 2022	\$ 5,650.00	\$ 0.00	\$ 5,650.00
4000 EXTRA CURRICULAR ACTIVITIES	\$ 5,650.00	\$ 0.00	\$ 5,650.00
4600 SCHL & PUBLIC SERV CO-CURRIC.	\$ 5,650.00	\$ 0.00	\$ 5,650.00
800 MISCELLANEOUS OBJECTS	\$ 5,650.00	\$ 0.00	\$ 5,650.00
200 9023 CLASS OF 2023	\$ 5,475.00	\$ 0.00	\$ 5,475.00
4000 EXTRA CURRICULAR ACTIVITIES	\$ 5,475.00	\$ 0.00	\$ 5,475.00
4600 SCHL & PUBLIC SERV CO-CURRIC.	\$ 5,475.00	\$ 0.00	\$ 5,475.00
800 MISCELLANEOUS OBJECTS	\$ 5,475.00	\$ 0.00	\$ 5,475.00
200 9025 CLASS OF 2025	\$ 2,340.00	\$ 0.00	\$ 2,340.00
4000 EXTRA CURRICULAR ACTIVITIES	\$ 2,340.00	\$ 0.00	\$ 2,340.00
4600 SCHL & PUBLIC SERV CO-CURRIC.	\$ 2,340.00	\$ 0.00	\$ 2,340.00

## PARKWAY LOCAL SCHOOL DISTRICT Appropriations Resolution Report

Rev. Code Sec. 5705.38

Fiscal Year: 2022

PARKWAY LOCAL SCHOOL DISTRICT

Include Zero Balance Accounts: false

	Total Appropriation	Prior FY Carry Over	Appropriations
800 MISCELLANEOUS OBJECTS	\$ 2,340.00	\$ 0.00	\$ 2,340.00
200 9110 ART CLUB	\$ 250.00	\$ 0.00	\$ 250.00
4000 EXTRA CURRICULAR ACTIVITIES	\$ 250.00	\$ 0.00	\$ 250.00
4100 ACADEMIC & SUBJECT ORIENTED	\$ 250.00	\$ 0.00	\$ 250.00
800 MISCELLANEOUS OBJECTS	\$ 250.00	\$ 0.00	\$ 250.00
200 9200 FOREIGN LANGUAGE CLUB	\$ 381.11	\$ 0.00	\$ 381.11
4000 EXTRA CURRICULAR ACTIVITIES	\$ 381.11	\$ 0.00	\$ 381.11
4100 ACADEMIC & SUBJECT ORIENTED	\$ 381.11	\$ 0.00	\$ 381.11
800 MISCELLANEOUS OBJECTS	\$ 381.11	\$ 0.00	\$ 381.11
200 9220 DRAMA CLUB	\$ 2,100.00	\$ 0.00	\$ 2,100.00
4000 EXTRA CURRICULAR ACTIVITIES	\$ 2,100.00	\$ 0.00	\$ 2,100.00
4100 ACADEMIC & SUBJECT ORIENTED	\$ 2,100.00	\$ 0.00	\$ 2,100.00
800 MISCELLANEOUS OBJECTS	\$ 2,100.00	\$ 0.00	\$ 2,100.00
200 9240 MIDDLE SCHOOL MUSICAL	\$ 1,686.27	\$ 0.00	\$ 1,686.27
4000 EXTRA CURRICULAR ACTIVITIES	\$ 1,686.27	\$ 0.00	\$ 1,686.27
4100 ACADEMIC & SUBJECT ORIENTED	\$ 1,686.27	\$ 0.00	\$ 1,686.27
800 MISCELLANEOUS OBJECTS	\$ 1,686.27	\$ 0.00	\$ 1,686.27
200 9320 FCCLA	\$ 1,520.00	\$ 0.00	\$ 1,520.00
4000 EXTRA CURRICULAR ACTIVITIES	\$ 1,520.00	\$ 0.00	\$ 1,520.00
4300 OCCUPATION ORIENTED ACTIVITIES	\$ 1,520.00	\$ 0.00	\$ 1,520.00
800 MISCELLANEOUS OBJECTS	\$ 1,520.00	\$ 0.00	\$ 1,520.00
200 9330 FFA	\$ 15,558.76	\$ 1,200.00	\$ 16,758.76
4000 EXTRA CURRICULAR ACTIVITIES	\$ 15,558.76	\$ 1,200.00	\$ 16,758.76
4300 OCCUPATION ORIENTED ACTIVITIES	\$ 15,558.76	\$ 1,200.00	\$ 16,758.76
800 MISCELLANEOUS OBJECTS	\$ 15,558.76	\$ 1,200.00	\$ 16,758.76
200 9360 TECH CLUB	\$ 76.99	\$ 0.00	\$ 76.99
4000 EXTRA CURRICULAR ACTIVITIES	\$ 76.99	\$ 0.00	\$ 76.99
4300 OCCUPATION ORIENTED ACTIVITIES	\$ 76.99	\$ 0.00	\$ 76.99
800 MISCELLANEOUS OBJECTS	\$ 76.99	\$ 0.00	\$ 76.99
200 9550 PEP CLUB	\$ 2,577.13	\$ 0.00	\$ 2,577.13
4000 EXTRA CURRICULAR ACTIVITIES	\$ 2,577.13	\$ 0.00	\$ 2,577.13
4500 SPORT ORIENTED ACTIVITIES	\$ 2,577.13	\$ 0.00	\$ 2,577.13
800 MISCELLANEOUS OBJECTS	\$ 2,577.13	\$ 0.00	\$ 2,577.13
200 9600 MS STUDENT COUNCIL	\$ 50.00	\$ 0.00	\$ 50.00
4000 EXTRA CURRICULAR ACTIVITIES	\$ 50.00	\$ 0.00	\$ 50.00
4600 SCHL & PUBLIC SERV CO-CURRIC.	\$ 50.00	\$ 0.00	\$ 50.00
800 MISCELLANEOUS OBJECTS	\$ 50.00	\$ 0.00	\$ 50.00

**PARKWAY LOCAL SCHOOL DISTRICT  
Appropriations Resolution Report**

Rev. Code Sec. 5705.38

Fiscal Year: 2022

PARKWAY LOCAL SCHOOL DISTRICT

Include Zero Balance Accounts: false

	Total Appropriation	Prior FY Carry Over	Appropriations
200 9610 HS STUDENT COUNCIL	\$ 793.94	\$ 0.00	\$ 793.94
4000 EXTRA CURRICULAR ACTIVITIES	\$ 793.94	\$ 0.00	\$ 793.94
4600 SCHL & PUBLIC SERV CO-CURRIC.	\$ 793.94	\$ 0.00	\$ 793.94
800 MISCELLANEOUS OBJECTS	\$ 793.94	\$ 0.00	\$ 793.94
200 9710 NATIONAL HONOR SOCIETY	\$ 714.20	\$ 0.00	\$ 714.20
4000 EXTRA CURRICULAR ACTIVITIES	\$ 714.20	\$ 0.00	\$ 714.20
4100 ACADEMIC & SUBJECT ORIENTED	\$ 714.20	\$ 0.00	\$ 714.20
800 MISCELLANEOUS OBJECTS	\$ 714.20	\$ 0.00	\$ 714.20
300 DISTRICT MANAGED ACTIVITY	\$ 176,659.41	\$ 13,177.00	\$ 189,836.41
300 0000 ATHLETIC FUND	\$ 163,304.55	\$ 13,177.00	\$ 176,481.55
4000 EXTRA CURRICULAR ACTIVITIES	\$ 163,304.55	\$ 13,177.00	\$ 176,481.55
4500 SPORT ORIENTED ACTIVITIES	\$ 163,304.55	\$ 13,177.00	\$ 176,481.55
100 PERSONAL SERVICES - SALARIES	\$ 3,980.00	\$ 0.00	\$ 3,980.00
400 PURCHASED SERVICES	\$ 1,333.25	\$ 0.00	\$ 1,333.25
500 SUPPLIES AND MATERIALS	\$ 284.84	\$ 0.00	\$ 284.84
600 CAPITAL OUTLAY	\$ 11,991.16	\$ 0.00	\$ 11,991.16
800 MISCELLANEOUS OBJECTS	\$ 145,715.30	\$ 13,177.00	\$ 158,892.30
300 9440 BAND	\$ 2,342.45	\$ 0.00	\$ 2,342.45
4000 EXTRA CURRICULAR ACTIVITIES	\$ 2,342.45	\$ 0.00	\$ 2,342.45
4100 ACADEMIC & SUBJECT ORIENTED	\$ 2,342.45	\$ 0.00	\$ 2,342.45
200 EMPLOYEES RETIRE. & INSUR. BEN	\$ 33.45	\$ 0.00	\$ 33.45
800 MISCELLANEOUS OBJECTS	\$ 2,309.00	\$ 0.00	\$ 2,309.00
300 9460 CHOIR	\$ 600.00	\$ 0.00	\$ 600.00
4000 EXTRA CURRICULAR ACTIVITIES	\$ 600.00	\$ 0.00	\$ 600.00
4100 ACADEMIC & SUBJECT ORIENTED	\$ 600.00	\$ 0.00	\$ 600.00
800 MISCELLANEOUS OBJECTS	\$ 600.00	\$ 0.00	\$ 600.00
300 9650 HIGH SCHOOL MEDIA CENTER	\$ 1,798.00	\$ 0.00	\$ 1,798.00
4000 EXTRA CURRICULAR ACTIVITIES	\$ 1,798.00	\$ 0.00	\$ 1,798.00
4600 SCHL & PUBLIC SERV CO-CURRIC.	\$ 1,798.00	\$ 0.00	\$ 1,798.00
800 MISCELLANEOUS OBJECTS	\$ 1,798.00	\$ 0.00	\$ 1,798.00
300 9653 ELEMENTARY MEDIA CENTER	\$ 196.23	\$ 0.00	\$ 196.23
4000 EXTRA CURRICULAR ACTIVITIES	\$ 196.23	\$ 0.00	\$ 196.23
4600 SCHL & PUBLIC SERV CO-CURRIC.	\$ 196.23	\$ 0.00	\$ 196.23
800 MISCELLANEOUS OBJECTS	\$ 196.23	\$ 0.00	\$ 196.23
300 9680 YEARBOOK	\$ 8,418.18	\$ 0.00	\$ 8,418.18
4000 EXTRA CURRICULAR ACTIVITIES	\$ 8,418.18	\$ 0.00	\$ 8,418.18
4600 SCHL & PUBLIC SERV CO-CURRIC.	\$ 8,418.18	\$ 0.00	\$ 8,418.18

**PARKWAY LOCAL SCHOOL DISTRICT  
Appropriations Resolution Report**

Rev. Code Sec. 5705.38

Fiscal Year: 2022

PARKWAY LOCAL SCHOOL DISTRICT

Include Zero Balance Accounts: false

	Total Appropriation	Prior FY Carry Over	Appropriations
800 MISCELLANEOUS OBJECTS	\$ 8,418.18	\$ 0.00	\$ 8,418.18
439 PUBLIC SCHOOL PRESCHOOL	\$ 20,000.00	\$ 0.00	\$ 20,000.00
439 9022 PUBLIC SCHOOL PRESCHOOL	\$ 20,000.00	\$ 0.00	\$ 20,000.00
1000 INSTRUCTION	\$ 20,000.00	\$ 0.00	\$ 20,000.00
1100 REGULAR INSTRUCTION	\$ 20,000.00	\$ 0.00	\$ 20,000.00
100 PERSONAL SERVICES - SALARIES	\$ 20,000.00	\$ 0.00	\$ 20,000.00
451 DATA COMMUNICATION FUND	\$ 5,400.00	\$ 0.00	\$ 5,400.00
451 9022 DATA COMMUNICATION FUND	\$ 5,400.00	\$ 0.00	\$ 5,400.00
1000 INSTRUCTION	\$ 5,400.00	\$ 0.00	\$ 5,400.00
1100 REGULAR INSTRUCTION	\$ 5,400.00	\$ 0.00	\$ 5,400.00
400 PURCHASED SERVICES	\$ 5,400.00	\$ 0.00	\$ 5,400.00
461 VOCATIONAL EDUC. ENHANCEMENTS	\$ 3,045.68	\$ 0.00	\$ 3,045.68
461 9022 AG EDUCATION 5TH QUARTER	\$ 3,045.68	\$ 0.00	\$ 3,045.68
1000 INSTRUCTION	\$ 3,045.68	\$ 0.00	\$ 3,045.68
1300 VOCATIONAL INSTRUCTION	\$ 3,045.68	\$ 0.00	\$ 3,045.68
100 PERSONAL SERVICES - SALARIES	\$ 3,045.68	\$ 0.00	\$ 3,045.68
467 STUDENT WELLNESS AND SUCCESS FUND	\$ 300,588.42	\$ 0.00	\$ 300,588.42
467 0000 STUDENT WELLNESS & SUCCESS	\$ 300,588.42	\$ 0.00	\$ 300,588.42
2000 SUPPORTING SERVICES	\$ 268,204.02	\$ 0.00	\$ 268,204.02
2100 SUPPORT SERVICES - PUPILS	\$ 268,204.02	\$ 0.00	\$ 268,204.02
100 PERSONAL SERVICES - SALARIES	\$ 186,467.34	\$ 0.00	\$ 186,467.34
200 EMPLOYEES RETIRE. & INSUR. BEN	\$ 81,736.68	\$ 0.00	\$ 81,736.68
7000 OTHER USES OF FUNDS	\$ 32,384.40	\$ 0.00	\$ 32,384.40
7500 REFUND OF PRIOR YEARS RECEIPTS	\$ 32,384.40	\$ 0.00	\$ 32,384.40
900 OTHER USES OF FUNDS	\$ 32,384.40	\$ 0.00	\$ 32,384.40
499 MISCELLANEOUS STATE GRANT FUND	\$ 140,231.55	\$ 0.00	\$ 140,231.55
499 9022 MISCELLANEOUS STATE GRANT FUND	\$ 135,000.00	\$ 0.00	\$ 135,000.00
2000 SUPPORTING SERVICES	\$ 135,000.00	\$ 0.00	\$ 135,000.00
2800 SUPPORT SERV - PUPIL TRANSPOR.	\$ 135,000.00	\$ 0.00	\$ 135,000.00
600 CAPITAL OUTLAY	\$ 135,000.00	\$ 0.00	\$ 135,000.00
499 9092 MISCELLANEOUS STATE GRANT FUND	\$ 5,231.55	\$ 0.00	\$ 5,231.55
2000 SUPPORTING SERVICES	\$ 5,231.55	\$ 0.00	\$ 5,231.55
2400 SUPPORT SERV- ADMINISTRATIVE	\$ 5,231.55	\$ 0.00	\$ 5,231.55
500 SUPPLIES AND MATERIALS	\$ 5,231.55	\$ 0.00	\$ 5,231.55
507 ELEMENTARY AND SECONDARY SCHOOL EMERGENCY RELIEF FUND	\$ 1,657,210.19	\$ 0.00	\$ 1,657,210.19
507 0000 ESSER ELEM & SECNDRY EMERGENCY RELIEF COVID	\$ 505,237.42	\$ 0.00	\$ 505,237.42
1000 INSTRUCTION	\$ 292,152.62	\$ 0.00	\$ 292,152.62

## PARKWAY LOCAL SCHOOL DISTRICT Appropriations Resolution Report

Rev. Code Sec. 5705.38

Fiscal Year: 2022

PARKWAY LOCAL SCHOOL DISTRICT

Include Zero Balance Accounts: false

	Total Appropriation	Prior FY Carry Over	Appropriations
1100 REGULAR INSTRUCTION	\$ 292,152.62	\$ 0.00	\$ 292,152.62
100 PERSONAL SERVICES - SALARIES	\$ 188,591.33	\$ 0.00	\$ 188,591.33
200 EMPLOYEES RETIRE. & INSUR. BEN	\$ 76,711.49	\$ 0.00	\$ 76,711.49
500 SUPPLIES AND MATERIALS	\$ 26,849.80	\$ 0.00	\$ 26,849.80
2000 SUPPORTING SERVICES	\$ 213,084.80	\$ 0.00	\$ 213,084.80
2400 SUPPORT SERV- ADMINISTRATIVE	\$ 114,018.12	\$ 0.00	\$ 114,018.12
100 PERSONAL SERVICES - SALARIES	\$ 81,900.00	\$ 0.00	\$ 81,900.00
200 EMPLOYEES RETIRE. & INSUR. BEN	\$ 32,118.12	\$ 0.00	\$ 32,118.12
2700 OPERATION & MAINT OF PLANT SER	\$ 99,066.68	\$ 0.00	\$ 99,066.68
400 PURCHASED SERVICES	\$ 59,066.68	\$ 0.00	\$ 59,066.68
500 SUPPLIES AND MATERIALS	\$ 20,000.00	\$ 0.00	\$ 20,000.00
600 CAPITAL OUTLAY	\$ 20,000.00	\$ 0.00	\$ 20,000.00
507 9022 ARP ESSER	\$ 1,151,972.77	\$ 0.00	\$ 1,151,972.77
1000 INSTRUCTION	\$ 501,472.00	\$ 0.00	\$ 501,472.00
1100 REGULAR INSTRUCTION	\$ 501,472.00	\$ 0.00	\$ 501,472.00
100 PERSONAL SERVICES - SALARIES	\$ 262,200.00	\$ 0.00	\$ 262,200.00
200 EMPLOYEES RETIRE. & INSUR. BEN	\$ 44,336.00	\$ 0.00	\$ 44,336.00
500 SUPPLIES AND MATERIALS	\$ 194,936.00	\$ 0.00	\$ 194,936.00
2000 SUPPORTING SERVICES	\$ 650,500.77	\$ 0.00	\$ 650,500.77
2400 SUPPORT SERV- ADMINISTRATIVE	\$ 40,782.64	\$ 0.00	\$ 40,782.64
100 PERSONAL SERVICES - SALARIES	\$ 32,300.00	\$ 0.00	\$ 32,300.00
200 EMPLOYEES RETIRE. & INSUR. BEN	\$ 8,482.64	\$ 0.00	\$ 8,482.64
2700 OPERATION & MAINT OF PLANT SER	\$ 409,718.13	\$ 0.00	\$ 409,718.13
100 PERSONAL SERVICES - SALARIES	\$ 167,000.00	\$ 0.00	\$ 167,000.00
200 EMPLOYEES RETIRE. & INSUR. BEN	\$ 17,966.36	\$ 0.00	\$ 17,966.36
600 CAPITAL OUTLAY	\$ 224,751.77	\$ 0.00	\$ 224,751.77
2800 SUPPORT SERV - PUPIL TRANSPOR.	\$ 200,000.00	\$ 0.00	\$ 200,000.00
600 CAPITAL OUTLAY	\$ 200,000.00	\$ 0.00	\$ 200,000.00
516 IDEA PART B GRANTS	\$ 47,433.65	\$ 0.00	\$ 47,433.65
516 9022 IDEA PART B GRANTS	\$ 47,433.65	\$ 0.00	\$ 47,433.65
1000 INSTRUCTION	\$ 47,433.65	\$ 0.00	\$ 47,433.65
1200 SPECIAL INSTRUCTION	\$ 47,433.65	\$ 0.00	\$ 47,433.65
100 PERSONAL SERVICES - SALARIES	\$ 47,433.65	\$ 0.00	\$ 47,433.65
572 TITLE I DISADVANTAGED CHILDREN	\$ 152,980.44	\$ 0.00	\$ 152,980.44
572 9022 TITLE I FY22	\$ 147,983.89	\$ 0.00	\$ 147,983.89
1000 INSTRUCTION	\$ 147,983.89	\$ 0.00	\$ 147,983.89
1200 SPECIAL INSTRUCTION	\$ 147,983.89	\$ 0.00	\$ 147,983.89

## PARKWAY LOCAL SCHOOL DISTRICT Appropriations Resolution Report

Rev. Code Sec. 5705.38

Fiscal Year: 2022

PARKWAY LOCAL SCHOOL DISTRICT

Include Zero Balance Accounts: false

	Total Appropriation	Prior FY Carry Over		Appropriations
100 PERSONAL SERVICES - SALARIES	\$ 111,316.80	\$ 0.00		\$ 111,316.80
200 EMPLOYEES RETIRE. & INSUR. BEN	\$ 33,378.56	\$ 0.00		\$ 33,378.56
400 PURCHASED SERVICES	\$ 3,288.53	\$ 0.00		\$ 3,288.53
572 9092 TITLE I DISADVANTAGED CHILDREN	\$ 4,996.55	\$ 0.00		\$ 4,996.55
1000 INSTRUCTION	\$ 4,996.55	\$ 0.00		\$ 4,996.55
1100 REGULAR INSTRUCTION	\$ 4,996.55	\$ 0.00		\$ 4,996.55
100 PERSONAL SERVICES - SALARIES	\$ 4,996.55	\$ 0.00		\$ 4,996.55
584 TITLE IV, PART A, STUDENT SUPPORT AND ACADEMIC ENRICHMENT	\$ 11,363.47	\$ 0.00		\$ 11,363.47
584 9022 TITLE IV-A STUDENT SUPPORT AND ACADEMIC	\$ 11,363.47	\$ 0.00		\$ 11,363.47
1000 INSTRUCTION	\$ 11,363.47	\$ 0.00		\$ 11,363.47
1100 REGULAR INSTRUCTION	\$ 11,363.47	\$ 0.00		\$ 11,363.47
500 SUPPLIES AND MATERIALS	\$ 11,363.47	\$ 0.00		\$ 11,363.47
587 IDEA PRESCHOOL-HANDICAPPED	\$ 3,511.81	\$ 0.00		\$ 3,511.81
587 9022 IDEA PRESCHOOL-HANDICAPPED	\$ 3,511.81	\$ 0.00		\$ 3,511.81
1000 INSTRUCTION	\$ 3,511.81	\$ 0.00		\$ 3,511.81
1100 REGULAR INSTRUCTION	\$ 3,511.81	\$ 0.00		\$ 3,511.81
400 PURCHASED SERVICES	\$ 3,511.81	\$ 0.00		\$ 3,511.81
590 IMPROVING TEACHER QUALITY	\$ 29,770.44	\$ 0.00		\$ 29,770.44
590 9022 TITLE II-A FY22	\$ 29,770.44	\$ 0.00		\$ 29,770.44
1000 INSTRUCTION	\$ 29,770.44	\$ 0.00		\$ 29,770.44
1100 REGULAR INSTRUCTION	\$ 29,770.44	\$ 0.00		\$ 29,770.44
100 PERSONAL SERVICES - SALARIES	\$ 29,770.44	\$ 0.00		\$ 29,770.44
<b>Grand Total All Funds</b>	<b>\$ 16,612,276.38</b>	<b>\$ 150,231.98</b>		<b>\$ 16,762,508.36</b>

# Appropriation Recap Report

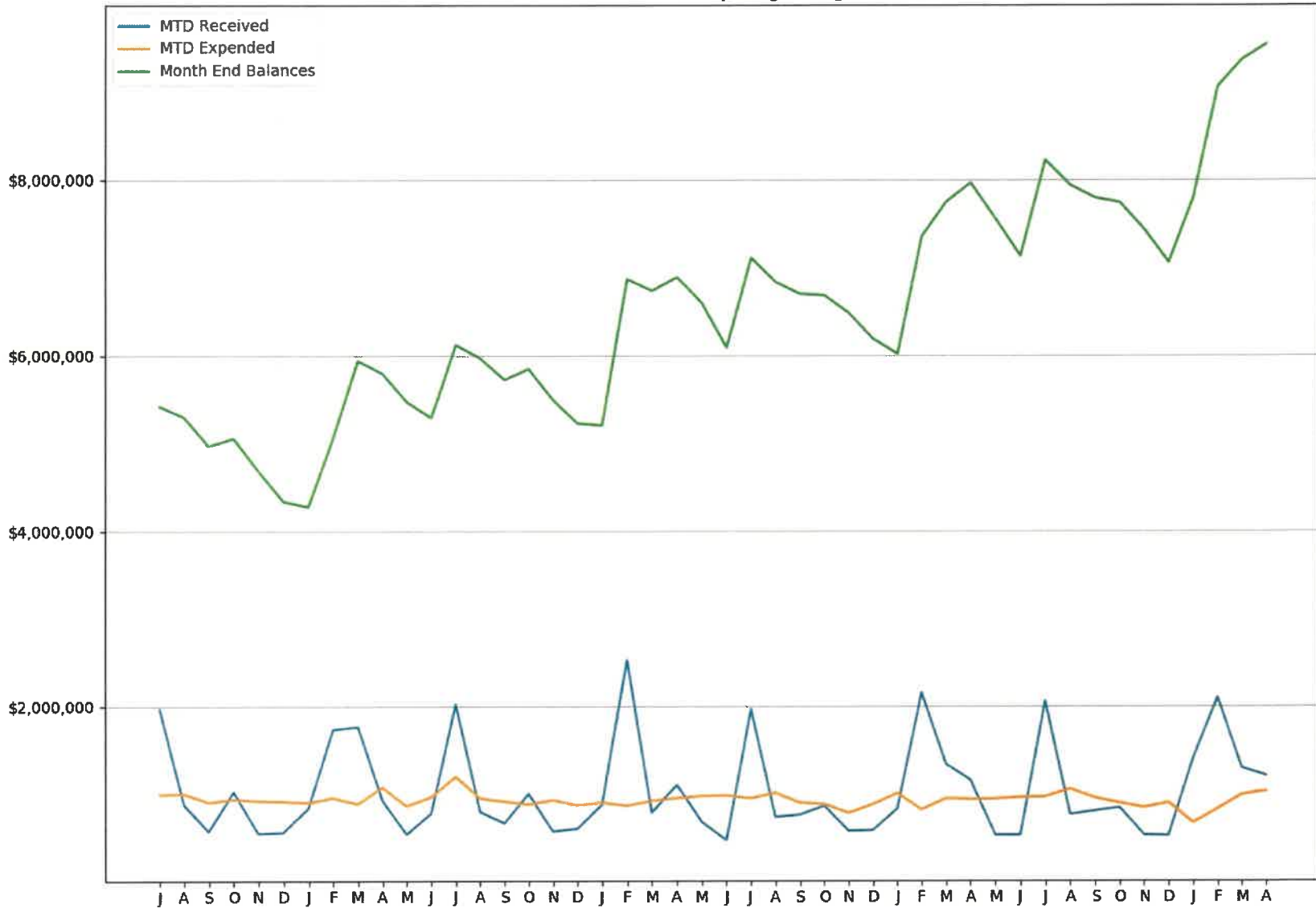
Governmental Fund Type	Total Appropriation	Prior FY Carry Over	Appropriations
<b>General Fund</b>			
001 GENERAL	\$ 12,351,352.54	\$ 78,713.05	\$ 12,430,065.59
<b>Total for General Fund</b>	<b>\$ 12,351,352.54</b>	<b>\$ 78,713.05</b>	<b>\$ 12,430,065.59</b>
<b>Debt Service</b>			
002 BOND RETIREMENT	\$ 750,053.26	\$ 0.00	\$ 750,053.26
<b>Total for Debt Service</b>	<b>\$ 750,053.26</b>	<b>\$ 0.00</b>	<b>\$ 750,053.26</b>
<b>Capital Projects</b>			
003 PERMANENT IMPROVEMENT	\$ 208,945.00	\$ 39,015.00	\$ 247,960.00
<b>Total for Capital Projects</b>	<b>\$ 208,945.00</b>	<b>\$ 39,015.00</b>	<b>\$ 247,960.00</b>
<b>Permanent Funds</b>			
007 SPECIAL TRUST	\$ 105.00	\$ 0.00	\$ 105.00
<b>Total for Permanent Funds</b>	<b>\$ 105.00</b>	<b>\$ 0.00</b>	<b>\$ 105.00</b>
<b>Special Revenue</b>			
007 SPECIAL TRUST	\$ 1,000.00	\$ 150.00	\$ 1,150.00
018 PUBLIC SCHOOL SUPPORT	\$ 105,178.78	\$ 5,003.00	\$ 110,181.78
019 OTHER GRANT	\$ 21,000.00	\$ 0.00	\$ 21,000.00
034 CLASSROOM FACILITIES MAINT.	\$ 44,905.00	\$ 12,940.00	\$ 57,845.00
200 STUDENT MANAGED ACTIVITY	\$ 44,960.27	\$ 1,200.00	\$ 46,160.27
300 DISTRICT MANAGED ACTIVITY	\$ 176,659.41	\$ 13,177.00	\$ 189,836.41
439 PUBLIC SCHOOL PRESCHOOL	\$ 20,000.00	\$ 0.00	\$ 20,000.00
451 DATA COMMUNICATION FUND	\$ 5,400.00	\$ 0.00	\$ 5,400.00
461 VOCATIONAL EDUC. ENHANCEMENTS	\$ 3,045.68	\$ 0.00	\$ 3,045.68
467 STUDENT WELLNESS AND SUCCESS FUND	\$ 300,588.42	\$ 0.00	\$ 300,588.42
499 MISCELLANEOUS STATE GRANT FUND	\$ 140,231.55	\$ 0.00	\$ 140,231.55
507 ELEMENTARY AND SECONDARY SCHOOL EMERGENCY RELIEF FUND	\$ 1,657,210.19	\$ 0.00	\$ 1,657,210.19
516 IDEA PART B GRANTS	\$ 47,433.65	\$ 0.00	\$ 47,433.65
572 TITLE I DISADVANTAGED CHILDREN	\$ 152,980.44	\$ 0.00	\$ 152,980.44
584 TITLE IV, PART A, STUDENT SUPPORT AND ACADEMIC ENRICHMENT	\$ 11,363.47	\$ 0.00	\$ 11,363.47
587 IDEA PRESCHOOL-HANDICAPPED	\$ 3,511.81	\$ 0.00	\$ 3,511.81
590 IMPROVING TEACHER QUALITY	\$ 29,770.44	\$ 0.00	\$ 29,770.44
<b>Total for Special Revenue</b>	<b>\$ 2,765,239.11</b>	<b>\$ 32,470.00</b>	<b>\$ 2,797,709.11</b>
<b>Total for Governmental Fund Type</b>	<b>\$ 16,075,694.91</b>	<b>\$ 150,198.05</b>	<b>\$ 16,225,892.96</b>
<b>Proprietary Fund Type</b>			
<b>Enterprise</b>			
006 FOOD SERVICE	\$ 469,137.24	\$ 33.93	\$ 469,171.17
011 ROTARY-SPECIAL SERVICES	\$ 10,500.00	\$ 0.00	\$ 10,500.00
020 SPECIAL ENTERPRISE FUND	\$ 51,544.23	\$ 0.00	\$ 51,544.23
<b>Total for Enterprise</b>	<b>\$ 531,181.47</b>	<b>\$ 33.93</b>	<b>\$ 531,215.40</b>
<b>Total for Proprietary Fund Type</b>	<b>\$ 531,181.47</b>	<b>\$ 33.93</b>	<b>\$ 531,215.40</b>
<b>Fiduciary Fund Type</b>			
<b>Private Purpose Trust Fund</b>			
007 SPECIAL TRUST	\$ 4,200.00	\$ 0.00	\$ 4,200.00
<b>Total for Private Purpose Trust Fund</b>	<b>\$ 4,200.00</b>	<b>\$ 0.00</b>	<b>\$ 4,200.00</b>
<b>Custodial Fund</b>			
022 DISTRICT CUSTODIAL	\$ 1,200.00	\$ 0.00	\$ 1,200.00
<b>Total for Custodial Fund</b>	<b>\$ 1,200.00</b>	<b>\$ 0.00</b>	<b>\$ 1,200.00</b>



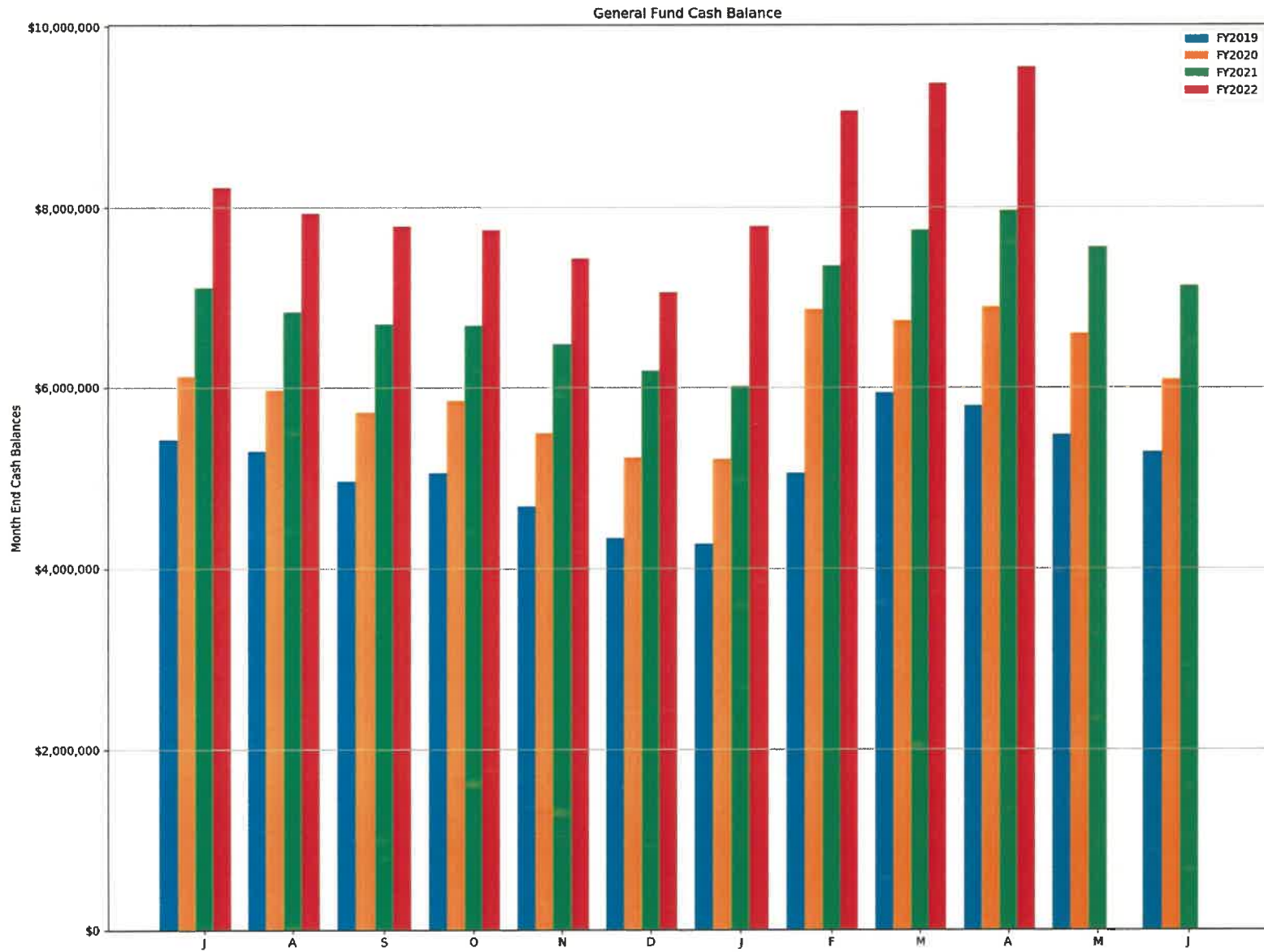
	Total Appropriation	Prior FY Carry Over	Appropriations
<b>Total for Fiduciary Fund Type</b>	<b>\$ 5,400.00</b>	<b>\$ 0.00</b>	<b>\$ 5,400.00</b>
<b>Grand Total All Funds</b>	<b>\$ 16,612,276.38</b>	<b>\$ 150,231.98</b>	<b>\$ 16,762,508.36</b>

# Parkway Local Schools

General Fund Rev/Exp Beginning FY2019



# Parkway Local Schools



# Parkway Local Schools

General Fund Expenditures: July - April FY2022

